

## Connector

**KLS** electronic  
www.cnkls.com

### Pin Header Series

#### KIS1-203A 2.54mm Mini Jumper Series

I

##### Electrical Specification:

Current Rating: 1 AMP  
Insulator Resistance: 5000M Ohm, min. at DC 500V  
Contact Resistance: 20m Ohm, max. at DC 100mA  
Operating Temperature: -55°C~+105°C

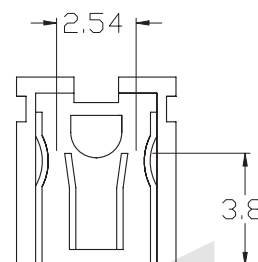
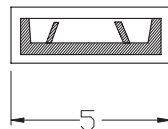
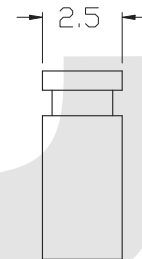
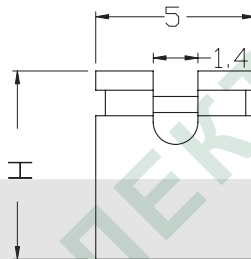
##### Material:

Housing: 30% Glass filled PBT UL94V-0  
Contacts: Brass or Phosphor Bronze  
Plating: Selective gold plated: gold plated on mating area and nickel plated on wire cutting area  
Gold plated: 3u" over 50u" nickel



OPEN

H
4.5
6.0
8.0



### ORDER INFORMATION

Product NO.: KLS1-203 A-O-B-6.0

Pos. NO. \_\_\_\_\_  
Series No. \_\_\_\_\_  
Pitch: A=2.54mm B=2.00mm  
Housing Type: O-Open C-Close  
Color: B-Black R-Red L-Blue G-Green

Height:  
Pitch 2.54mm Open Type: 4.5mm / 6.0mm / 8.0mm / 13.5mm  
Pitch 2.54mm Close Type: 6.5mm / 8.5mm

Pitch 2.0mm Open Type: 3.5mm / 4.5mm  
Pitch 2.0mm Close Type: 5.0mm

## Connector

**KLS** electronic  
www.cnkls.com

### Pin Header Series

#### KIS1-203A 2.54mm Mini Jumper Series

##### Electrical Specification:

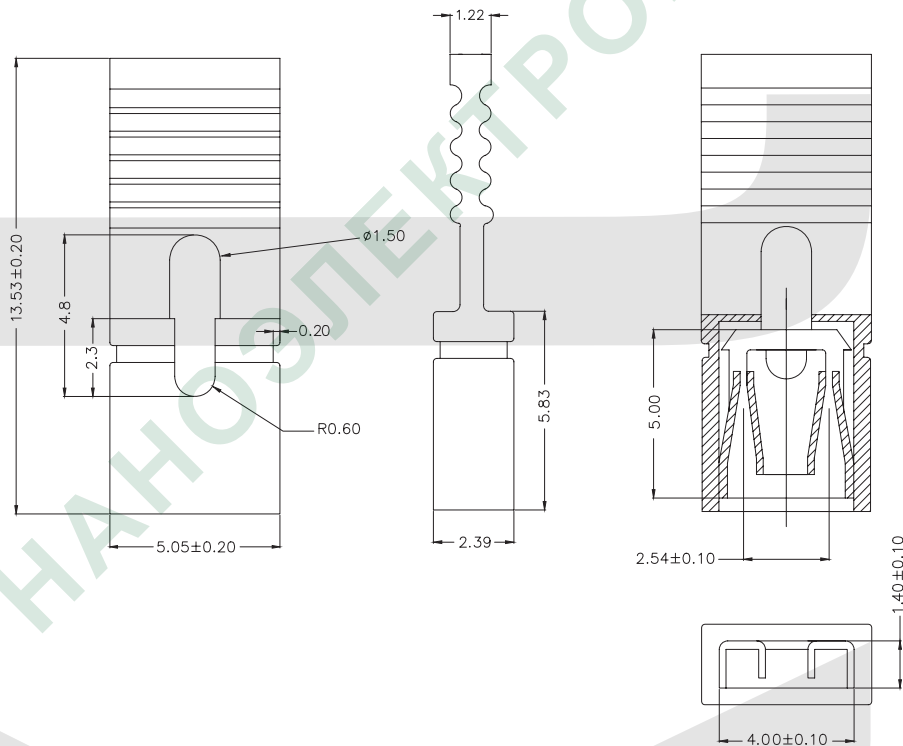
Current Rating: 1 AMP  
Insulator Resistance: 5000M Ohm, min. at DC 500V  
Contact Resistance: 20m Ohm, max. at DC 100mA  
Operating Temperature: -55°C~+105°C

##### Material:

Housing: 30% Glass filled PBT UL94V-0  
Contacts: Brass or Phosphor Bronze  
Plating: Selective gold plated: gold plated on mating area and nickel plated on wire cutting area  
Gold plated: 3u" over 50u" nickel



OPEN



### ORDER INFORMATION

Product NO.: KLS1-203 A-O-B-13.5

Pos. NO. \_\_\_\_\_  
Series No. \_\_\_\_\_  
Pitch: A=2.54mm B=2.00mm \_\_\_\_\_  
Housing Type: O-Open C-Close \_\_\_\_\_  
Color: B-Black R-Red L-Blue G-Green \_\_\_\_\_

Height:  
Pitch 2.54mm Open Type: 4.5mm / 6.0mm / 8.0mm / 13.5mm  
Pitch 2.54mm Close Type: 6.5mm / 8.5mm  
Pitch 2.0mm Open Type: 3.5mm / 4.5mm  
Pitch 2.0mm Close Type: 5.0mm

## Connector

**KLS** electronic  
www.cnkls.com

### Pin Header Series

#### KIS1-203A 2.54mm Mini Jumper Series

##### Electrical Specification:

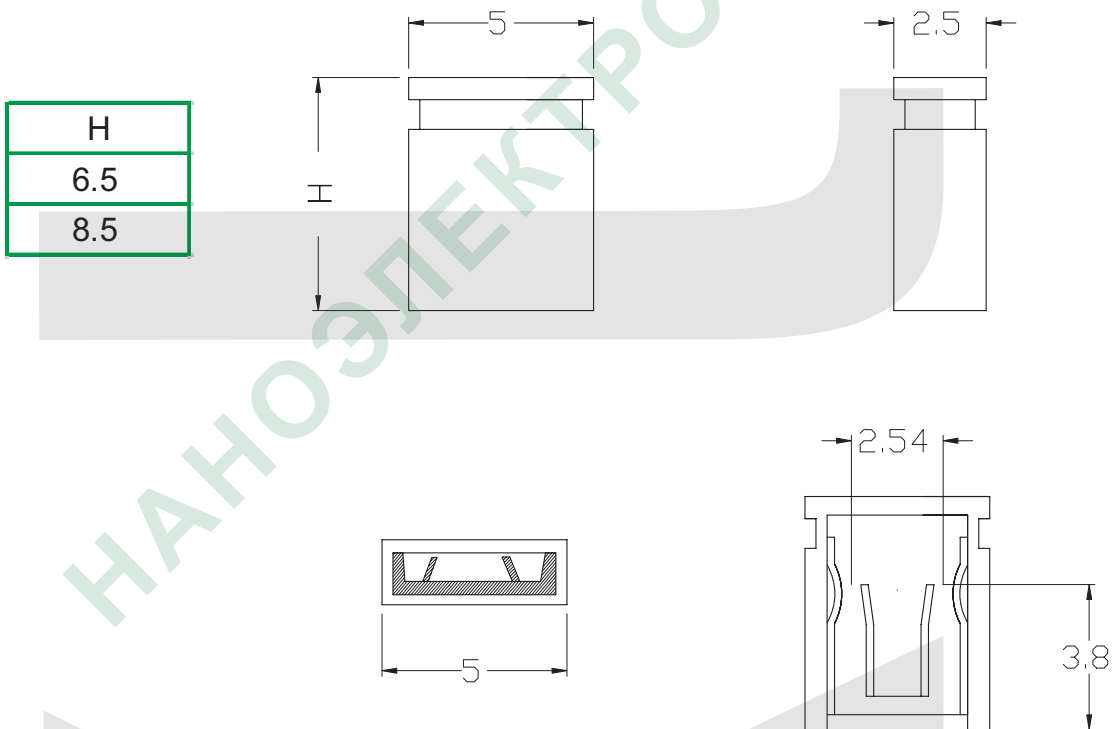
Current Rating: 1 AMP  
Insulator Resistance: 5000M Ohm, min. at DC 500V  
Contact Resistance: 20m Ohm, max. at DC 100mA  
Operating Temperature: -55°C~+105°C

##### Material:

Housing: 30% Glass filled PBT UL94V-0  
Contacts: Brass or Phosphor Bronze  
Plating: Selective gold plated: gold plated on mating area and nickel plated on wire cutting area  
Gold plated: 3u" over 50u" nickel



CLOSE



### ORDER INFORMATION

Product NO.: KLS1-203 A-C-B-6.0

Pos. NO.  
Series No.  
Pitch: A=2.54mm B=2.00mm  
Housing Type: O-Open C-Close  
Color: B-Black R-Red L-Blue G-Green

Height:  
Pitch 2.54mm Open Type:4.5mm / 6.0mm / 8.0mm / 13.5mm  
Pitch 2.54mm Close Type:6.5mm / 8.5mm  
Pitch 2.0mm Open Type:3.5mm / 4.5mm  
Pitch 2.0mm Close Type:5.0mm