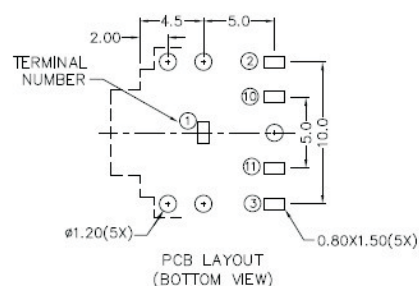
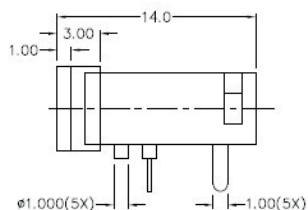
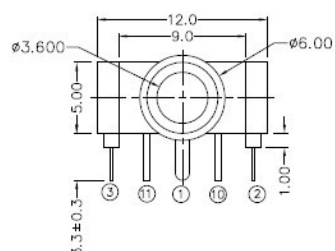
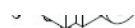


3.5mm Mono Jack * Stereo Jack Series
KLS1-TSJ-3.5-001A (Dip Stereo Jack)

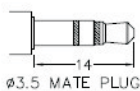
Housing Material / Center Pin Material	PBT / Brass
Rated Load	DC 12V 0.5A Max
Contact resistance	$\leq 0.03 \Omega$
Insulation resistance	$\geq 100M \Omega$
Withstand voltage	AC 500V(50Hz) 1min
Actuating Force	2.2~20N
Life	5000Time



MODEL NO.	TSH-3515	TSH-3514A	TSH-3514B	TSH-3513	TSH-3513A	TSH-3512
SCHEMATIC						

***MATERIAL**

TERMINAL 1 : COPPER ALLOY
 TERMINAL 2 : COPPER ALLOY
 TERMINAL 3 : COPPER ALLOY
 TERMINAL 10 : BRASS
 TERMINAL 11 : BRASS
 BUSHING : BRASS
 HOUSING : PBT


KLS1-TSJ-3.5-001B:

KLS1-TSJ-3.5-001C:

ORDER INFORMATION
Product No. : KLS1-TSJ-3.5-001A

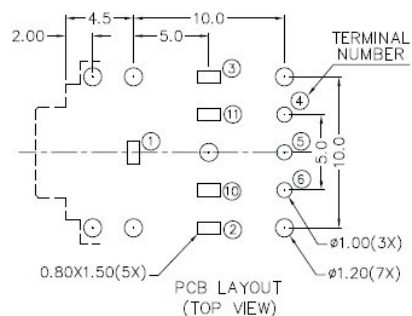
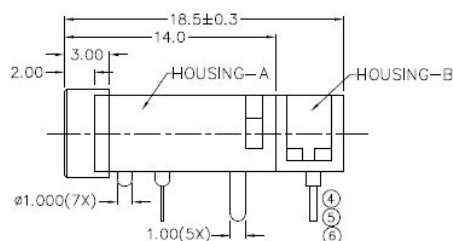
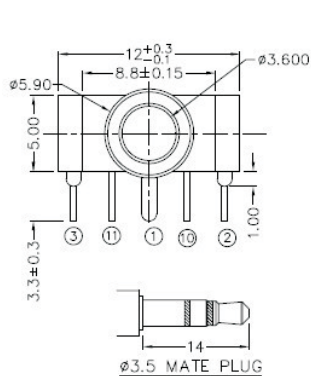
Pos. NO.

Series NO.

3.5mm Mono Jack * Stereo Jack Series

KLS1-TSJ-3.5-002A (Dip Stereo Jack)

Housing Material / Center Pin Material	PBT / Brass
Rated Load	DC 12V 1A Max
Contact resistance	$\leq 0.03 \Omega$
Insulation resistance	$\geq 100M \Omega$
Withstand voltage	AC 500V(50Hz) 1min
Actuating Force	3~20N
Life	5000Time

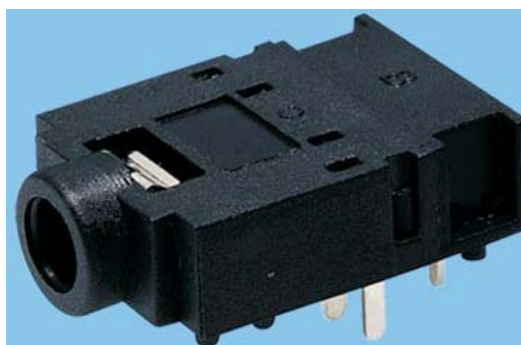


* MATERIAL

TERMINAL 1 : COPPER ALLOY
 TERMINAL 2 : COPPER ALLOY
 TERMINAL 3 : COPPER ALLOY
 TERMINAL 10 : BRASS
 TERMINAL 11 : BRASS
 TERMINAL 4,5,6 : BRASS
 HOUSING-A : PA66
 HOUSING-B : PA66
 INSULATOR : PA66
 PIN BOARD : PA66
 CONTACT CLIP : C5210R-EH AG CLAD

MODEL NO.	TSH-3615-12	TSH-3614A-12	TSH-3614B-12	TSH-3613-12	TSH-3613A-12	TSH-3612-12
SCHEMATIC						

KLS1-TSJ-3.5-002B:



ORDER INFORMATION

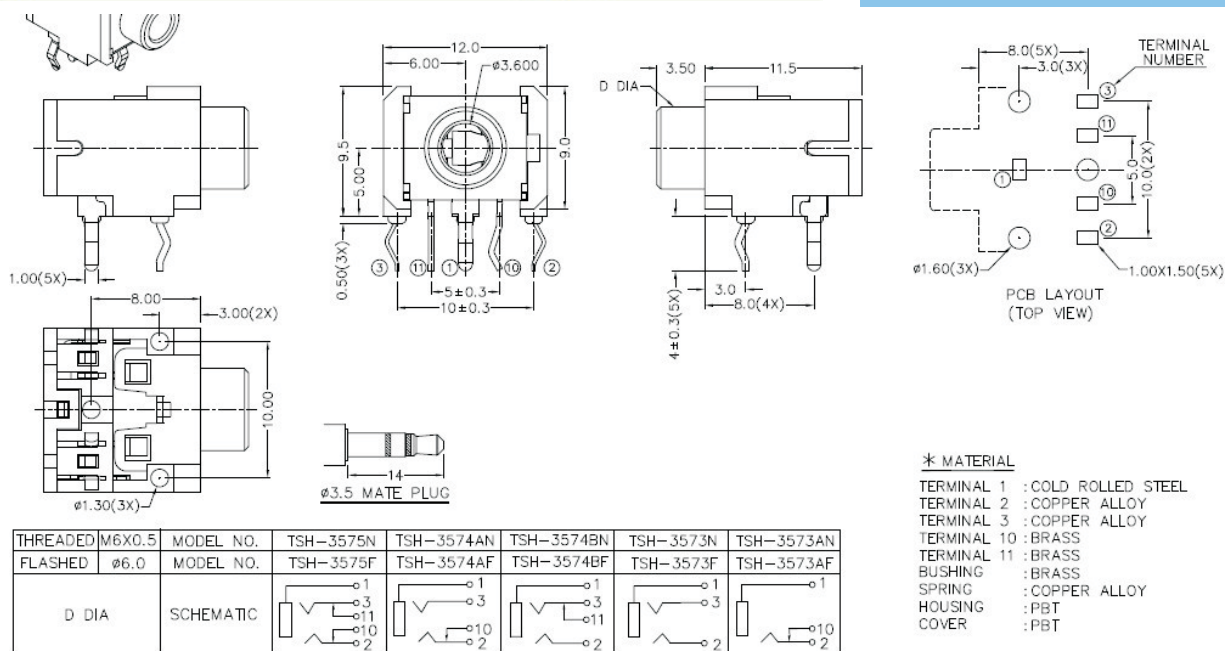
Product No. : KLS1-TSJ-3.5-002A

Pos. NO.

Series NO.

3.5mm Mono Jack * Stereo Jack Series
KLS1-TSJ-3.5-003A (Dip Stereo Jack)

Housing Material / Center Pin Material	PBT / Brass
Rated Load	DC 12V 1A Max
Contact resistance	$\leq 0.03 \Omega$
Insulation resistance	$\geq 100M \Omega$
Withstand voltage	AC 500V(50Hz) 1min
Actuating Force	3~20N
Life	5000Time


KLS1-TSJ-3.5-003B :

KLS1-TSJ-3.5-003C :

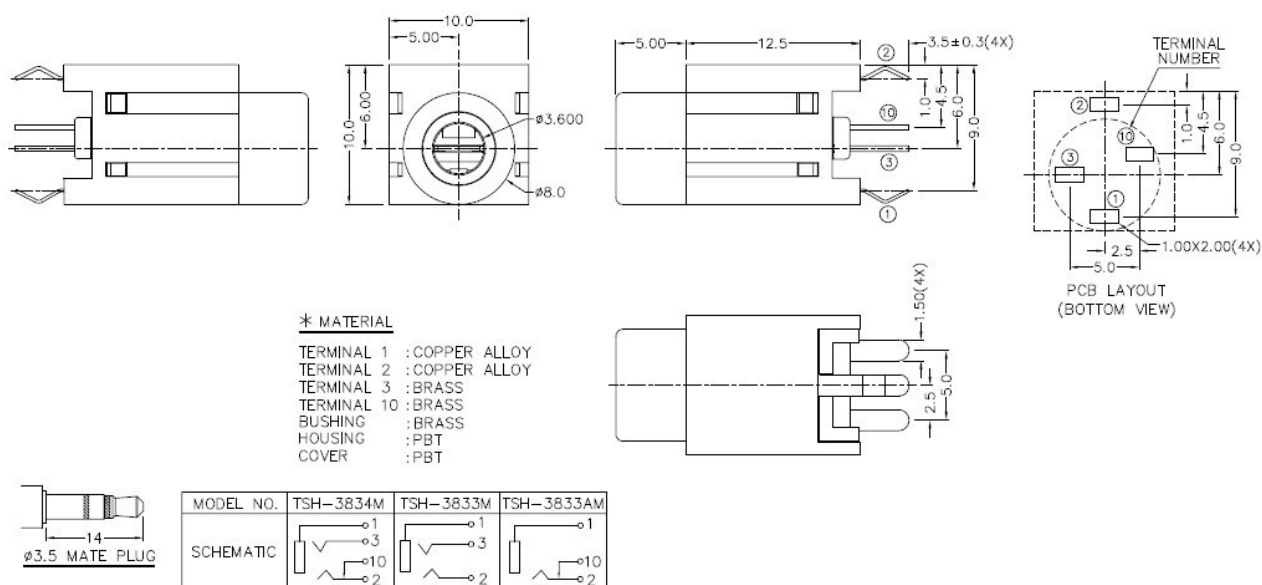
ORDER INFORMATION
Product No. : KLS1-TSJ-3.5-003A

Pos. NO.

Series NO.

3.5mm Mono Jack * Stereo Jack Series
KLS1-TSJ-3.5-004A (Dip Stereo Jack)

Housing Material / Center Pin Material	PBT / Brass
Rated Load	DC 12V 1A Max
Contact resistance	$\leq 0.03 \Omega$
Insulation resistance	$\geq 100M \Omega$
Withstand voltage	AC 500V(50Hz) 1min
Actuating Force	3~20N
Life	5000Time

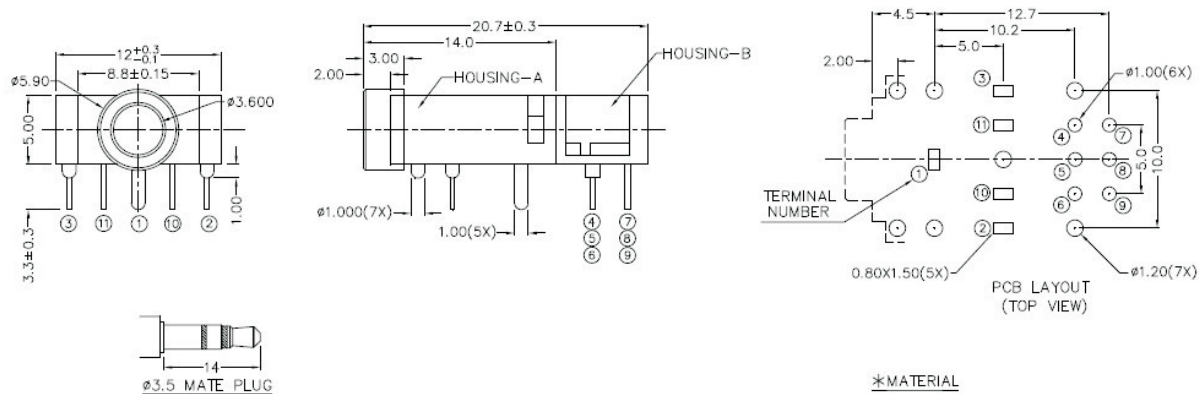

KLS1-TSJ-3.5-004B:

ORDER INFORMATION
Product No. : KLS1-TSJ-3.5-004A
Pos. NO.
Series NO.

3.5mm Mono Jack * Stereo Jack Series

KLS1-TSJ-3.5-005B (Dip Stereo Jack)

Housing Material / Center Pin Material	PBT / Brass
Rated Load	DC 12V 1A Max
Contact resistance	$\leq 0.03 \Omega$
Insulation resistance	$\geq 100M \Omega$
Withstand voltage	AC 500V(50Hz) 1min
Actuating Force	3~20N
Life	5000Time



MODEL NO.	TSH-3615-22	TSH-3614A-22	TSH-3614B-22	TSH-3613-22	TSH-3613A-22	TSH-3612-22
SCHEMATIC						

*MATERIAL	
TERMINAL 1	: COPPER ALLOY
TERMINAL 2	: COPPER ALLOY
TERMINAL 3	: COPPER ALLOY
TERMINAL 10	: BRASS
TERMINAL 11	: BRASS
TERMINAL 4, 5, 6, 7, 8, 9	: BRASS
HOUSING-A	: PA66
HOUSING-B	: PA66
INSULATOR	: PA66
PIN BOARD	: PA66
CONTACT CLIP	: C5210R-EH AG CLAD

KLS1-TSJ-3.5-005A:



ORDER INFORMATION

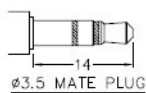
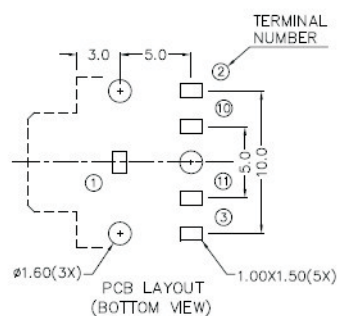
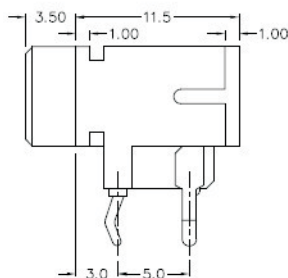
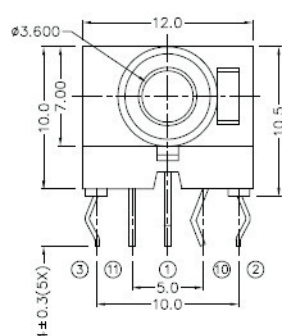
Product No. : KLS1-TSJ-3.5-005B

Pos. NO. _____

Series NO. _____

3.5mm Mono Jack * Stereo Jack Series
KLS1-TSJ-3.5-006A (Dip Stereo Jack)

Housing Material / Center Pin Material	PBT / Brass
Rated Load	DC 12V 1A Max
Contact resistance	$\leq 0.03 \Omega$
Insulation resistance	$\geq 100M \Omega$
Withstand voltage	AC 500V(50Hz) 1min
Actuating Force	3~20N
Life	5000Time



MODEL NO.	TSH-3565	TSH-3564A	TSH-3564B	TSH-3563	TSH-3563A	TSH-3562
SCHEMATIC						

*** MATERIAL**

TERMINAL 1 : BRASS
 TERMINAL 2 : COPPER ALLOY
 TERMINAL 3 : COPPER ALLOY
 TERMINAL 10: BRASS
 TERMINAL 11: BRASS
 HOUSING : PBT
 COVER : PBT

KLS1-TSJ-3.5-006B:

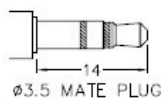
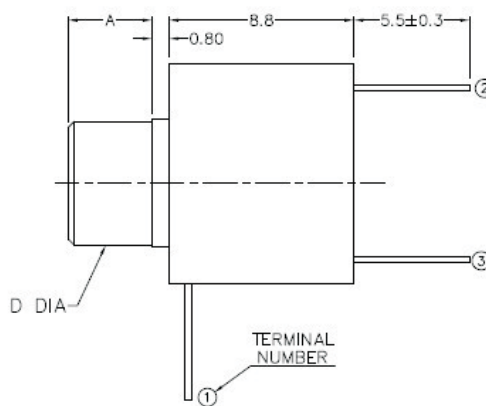
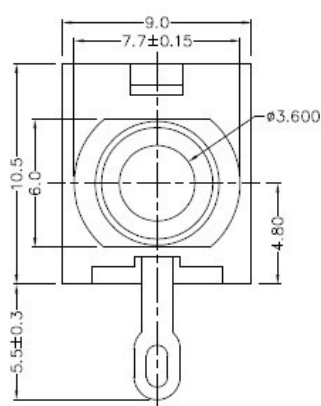
ORDER INFORMATION
Product No. : KLS1-TSJ-3.5-006A

Pos. NO.

Series NO.

3.5mm Mono Jack * Stereo Jack Series
KLS1-TSJ-3.5-007A (Dip Stereo Jack)

Housing Material / Center Pin Material	PBT / Brass
Rated Load	DC 12V 1A Max
Contact resistance	$\leq 0.03 \Omega$
Insulation resistance	$\geq 100M \Omega$
Withstand voltage	AC 500V(50Hz) 1min
Actuating Force	3~20N
Life	5000Time



MODEL NO.	TG-35SN	TG-35SF	TG-35SN2	TG-35SF2
D DIA	THREADED	FLASHED	THREADED	FLASHED
A	M6X0.5 4.0mm	φ6.0 4.0mm	M6X0.5 3.5mm	φ6.0 3.5mm
SCHEMATIC				

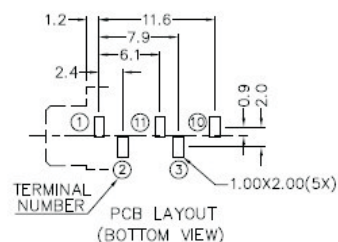
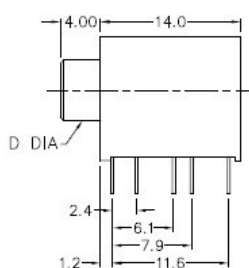
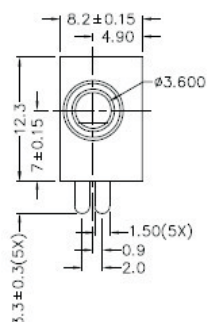
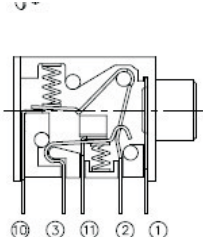
*** MATERIAL**

TERMINAL 1 : BRASS
 TERMINAL 2 : COPPER ALLOY
 TERMINAL 3 : BRASS
 BUSHING : BRASS
 HOUSING : PBT

ORDER INFORMATION
Product No. : KLS1-TSJ-3.5-007A
Pos. NO.
Series NO.

3.5mm Mono Jack * Stereo Jack Series
KLS1-TSJ-3.5-008A (Dip Stereo Jack)

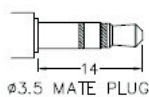
Housing Material / Center Pin Material	PBT / Brass
Rated Load	DC 12V 1A Max
Contact resistance	$\leq 0.03 \Omega$
Insulation resistance	$\geq 100M \Omega$
Withstand voltage	AC 500V(50Hz) 1min
Actuating Force	3~20N
Life	5000Time



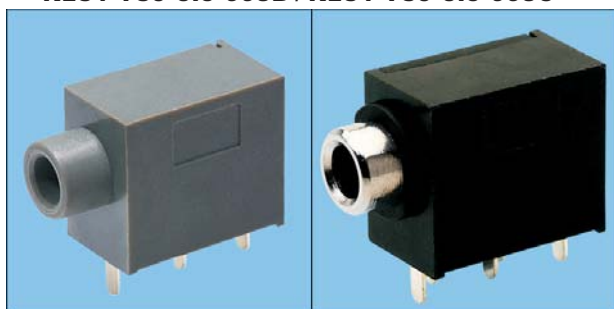
THREADED	M6X0.5	MODEL NO.	TSH-3555N	TSH-3554AN	TSH-3554BN	TSH-3553N	TSH-3553AN
FLASHED	Ø6.0	MODEL NO.	TSH-3555F	TSH-3554AF	TSH-3554BF	TSH-3553F	TSH-3553AF
D DIA	SCHEMATIC						

* MATERIAL

TERMINAL 1 : BRASS
 TERMINAL 2 : BRASS
 TERMINAL 3 : BRASS
 TERMINAL 10 : BRASS
 TERMINAL 11 : BRASS
 BUSHING : BRASS
 SPRING : STAINLESS STEEL
 HOUSING : PBT
 COVER : PBT



Ø3.5 MATE PLUG

KLS1-TSJ-3.5-008B / KLS1-TSJ-3.5-008C

KLS1-TSJ-3.5-008D / KLS1-TSJ-3.5-008E

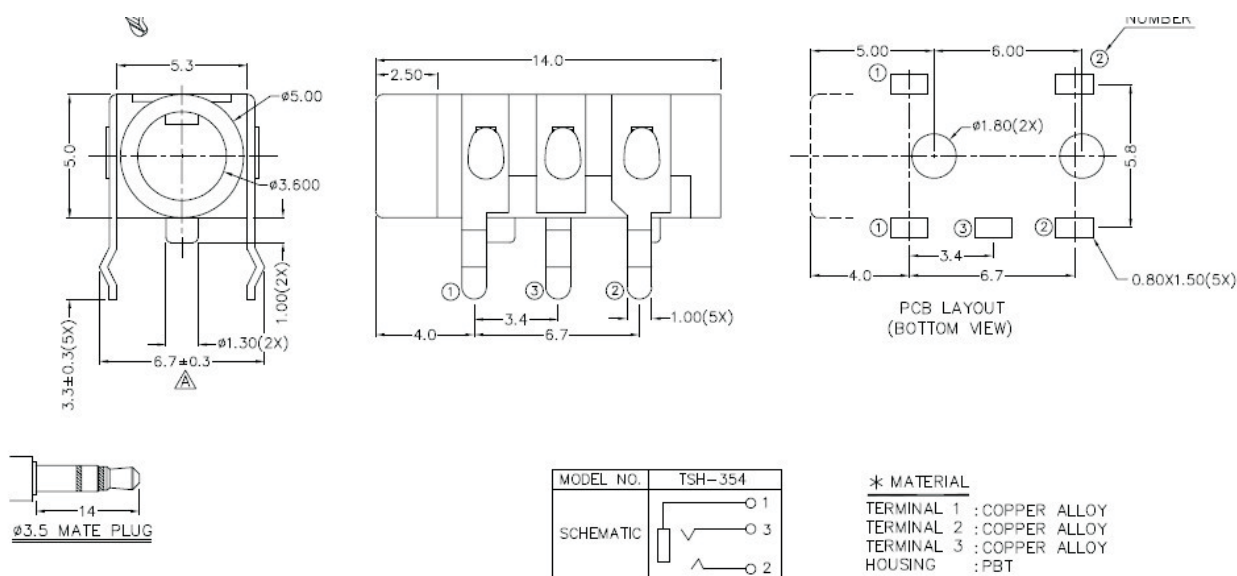
ORDER INFORMATION
Product No. : KLS1-TSJ-3.5-008A

Pos. NO.

Series NO.

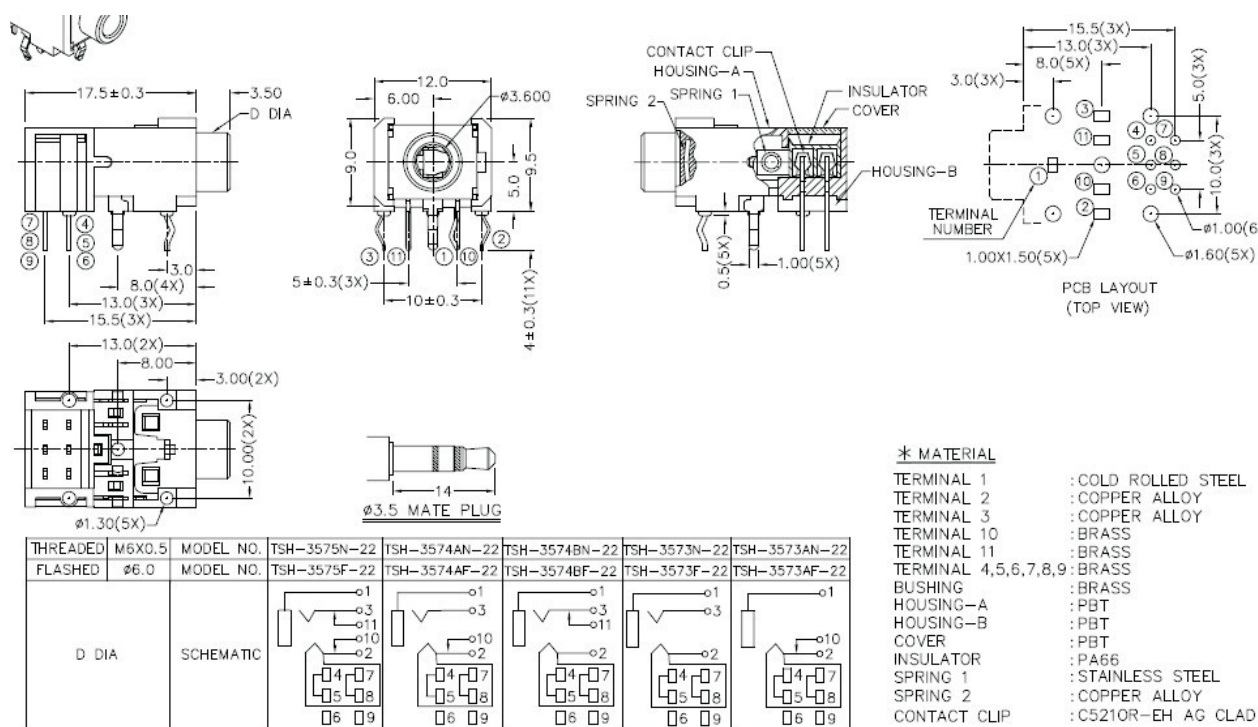
3.5mm Mono Jack * Stereo Jack Series
KLS1-TSJ-3.5-009A (Dip Stereo Jack)

Housing Material / Center Pin Material	PBT / Brass
Rated Load	DC 12V 1A Max
Contact resistance	$\leq 0.03 \Omega$
Insulation resistance	$\geq 100M \Omega$
Withstand voltage	AC 500V(50Hz) 1min
Actuating Force	3~20N
Life	5000Time


ORDER INFORMATION
Product No. : KLS1-TSJ-3.5-009A
Pos. NO.
Series NO.

3.5mm Mono Jack * Stereo Jack Series
KLS1-TSJ-3.5-010A (Dip Stereo Jack)

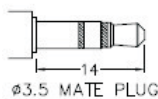
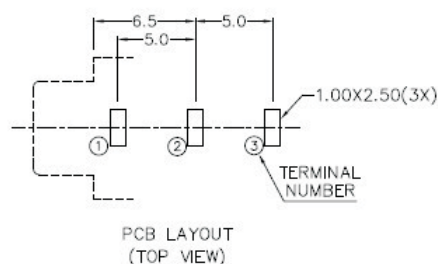
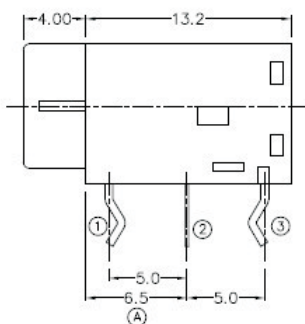
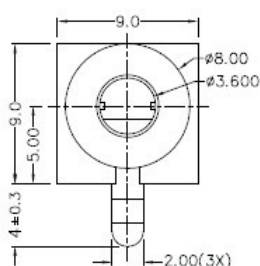
Housing Material / Center Pin Material	PBT / Brass
Rated Load	DC 12V 1A Max
Contact resistance	$\leq 0.03 \Omega$
Insulation resistance	$\geq 100M \Omega$
Withstand voltage	AC 500V(50Hz) 1min
Actuating Force	3~20N
Life	5000Time


ORDER INFORMATION
Product No. : KLS1-TSJ-3.5-010A
Pos. NO.
Series NO.

3.5mm Mono Jack * Stereo Jack Series

KLS1-TSJ-3.5-011A (Dip Stereo Jack)

Housing Material / Center Pin Material	PBT / Brass
Rated Load	DC 12V 1A Max
Contact resistance	$\leq 0.03 \Omega$
Insulation resistance	$\geq 100M \Omega$
Withstand voltage	AC 500V(50Hz) 1min
Actuating Force	3~20N
Life	5000Time



MODEL NO.	TSH-3583	TSH-3583A
SCHEMATIC		

* MATERIAL

TERMINAL 1 : BRASS
TERMINAL 2 : COPPER ALLOY
TERMINAL 3 : BRASS
HOUSING : PBT

ORDER INFORMATION

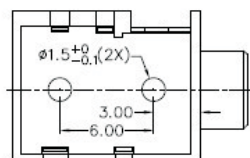
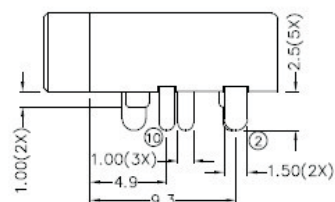
Product No. : KLS1-TSJ-3.5-011A

Pos. NO. _____

Series NO. _____

KLS1-TSJ-3.5-012A (Dip Stereo Jack)

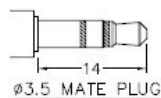
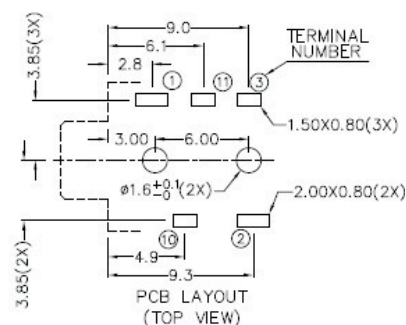
Housing Material / Center Pin Material	PBT / Brass
Rated Load	DC 12V 1A Max
Contact resistance	$\leq 0.03 \Omega$
Insulation resistance	$\geq 100M \Omega$
Withstand voltage	AC 500V(50Hz) 1min
Actuating Force	3~20N
Life	5000Time



```

TERMINAL 1 :COPPER ALLOY
TERMINAL 2 :COPPER ALLOY
TERMINAL 3 :COPPER ALLOY
TERMINAL 10 :BRASS
TERMINAL 11 :BRASS
HOUSING :PA66
COVER :PA66

```



MODEL NO.	TSH-3675	TSH-3674A	TSH-3674B	TSH-3673	TSH-3673A
SCHEMATIC					

Product No. : KLS1-TSJ-3.5-012A

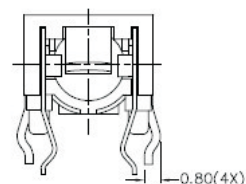
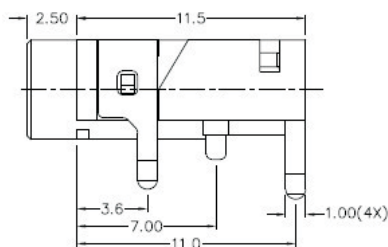
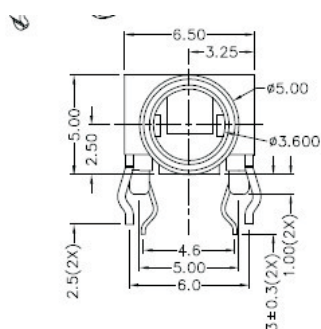
Pos. NO.

Series NO.

3.5mm Mono Jack * Stereo Jack Series

KLS1-TSJ-3.5-013A (Dip Stereo Jack)

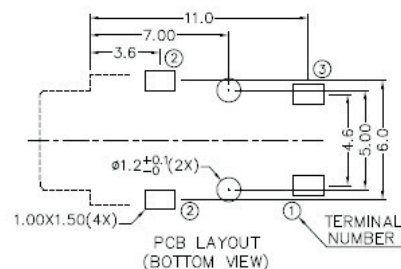
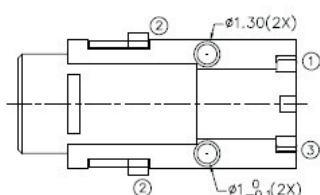
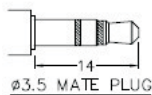
Housing Material / Center Pin Material	PBT / Brass
Rated Load	DC 12V 1A Max
Contact resistance	$\leq 0.03 \Omega$
Insulation resistance	$\geq 100M \Omega$
Withstand voltage	AC 500V(50Hz) 1min
Actuating Force	3~20N
Life	5000Time



* MATERIAL

TERMINAL 1 : COPPER ALLOY
TERMINAL 2 : COPPER ALLOY
TERMINAL 3 : COPPER ALLOY
HOUSING : PA66

MODEL NO.	TSH-3733
SCHEMATIC	



ORDER INFORMATION

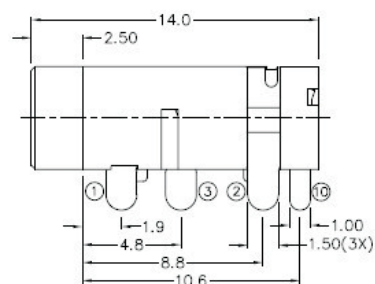
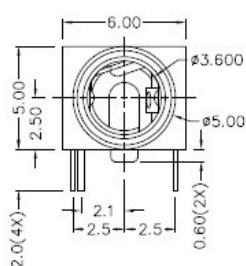
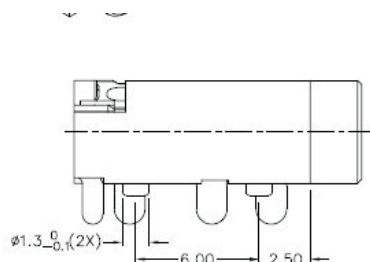
Product No. : KLS1-TSJ-3.5-013A

Pos. NO.

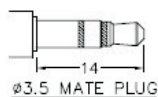
Series NO.

3.5mm Mono Jack * Stereo Jack Series
KLS1-TSJ-3.5-014A (Dip Stereo Jack)

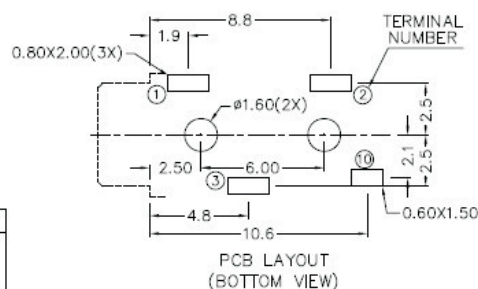
Housing Material / Center Pin Material	PBT / Brass
Rated Load	DC 12V 1A Max
Contact resistance	$\leq 0.03 \Omega$
Insulation resistance	$\geq 100M \Omega$
Withstand voltage	AC 500V(50Hz) 1min
Actuating Force	3~20N
Life	5000Time


*** MATERIAL**

TERMINAL 1 : COPPER ALLOY
 TERMINAL 2 : COPPER ALLOY
 TERMINAL 3 : COPPER ALLOY
 TERMINAL 10 : BRASS
 HOUSING : PA66

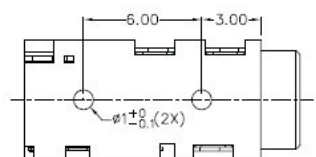
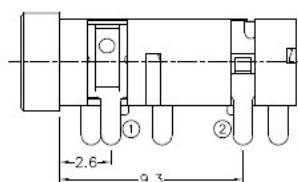
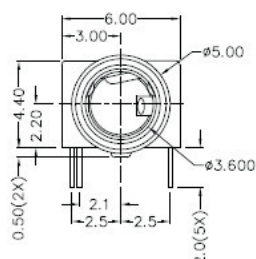
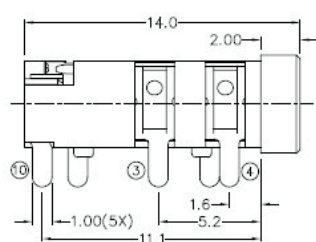


MODEL NO.	TSH-3814	TSH-3813	TSH-3813A
SCHEMATIC			

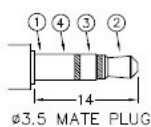

ORDER INFORMATION
Product No. : KLS1-TSJ-3.5-014A
Pos. NO.
Series NO.

3.5mm Mono Jack * Stereo Jack Series
KLS1-TSJ-3.5-015A (Dip Stereo Jack)

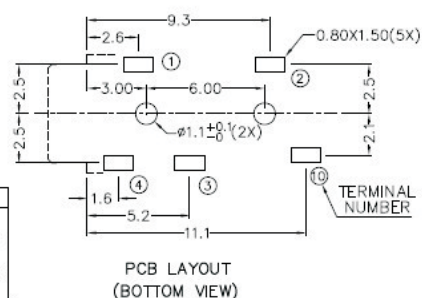
Housing Material / Center Pin Material	PBT / Brass
Rated Load	DC 12V 1A Max
Contact resistance	$\leq 0.03 \Omega$
Insulation resistance	$\geq 100M \Omega$
Withstand voltage	AC 500V(50Hz) 1min
Actuating Force	3~20N
Life	5000Time


*** MATERIAL**

TERMINAL 1 : COPPER ALLOY
 TERMINAL 2 : COPPER ALLOY
 TERMINAL 3 : COPPER ALLOY
 TERMINAL 4 : COPPER ALLOY
 TERMINAL 10: BRASS
 HOUSING : PA66



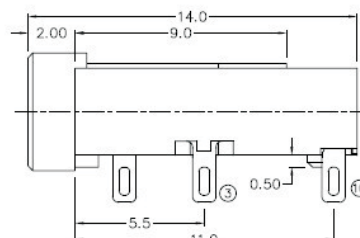
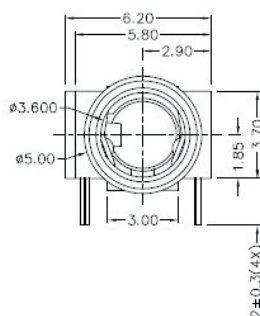
MODEL NO.	TSH-3865	TSH-3864	TSH-3864A	TSH-3863
SCHEMATIC				


ORDER INFORMATION
Product No. : KLS1-TSJ-3.5-015A
Pos. NO.
Series NO.

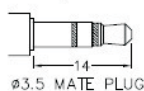
KLS1-TSJ-3.5-016A (Dip Stereo Jack)



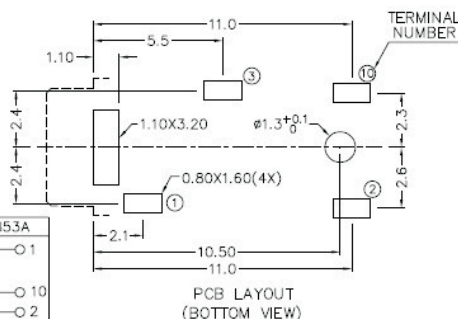
		ADD MATE PLUG	J.X.KUANG	3-8-20



TERMINAL 1 : COPPER ALLOY
 TERMINAL 2 : COPPER ALLOY
 TERMINAL 3 : COPPER ALLOY
 TERMINAL 10: BRASS
 HOUSING : PA66



MODEL NO.	TSH-3854	TSH-3853	TSH-3853A
SCHEMATIC			

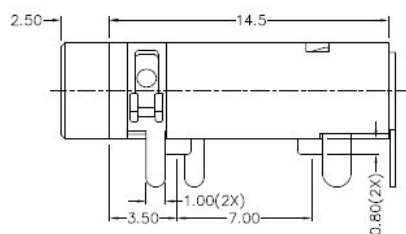
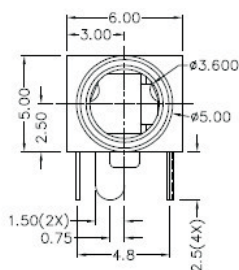
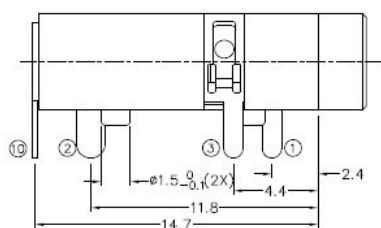
**Product No. : KLS1-TSJ-3.5-016A**

Pos. NO.

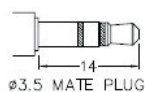
Series NO.

3.5mm Mono Jack * Stereo Jack Series
KLS1-TSJ-3.5-017A (Dip Stereo Jack)

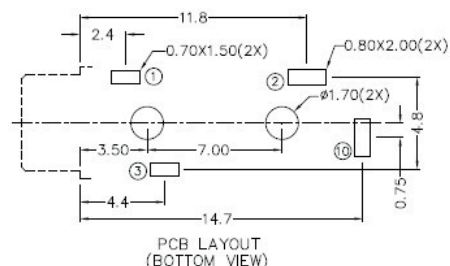
Housing Material / Center Pin Material	PA66 / Brass
Rated Load	DC 12V 1A Max
Contact resistance	$\leq 0.03 \Omega$
Insulation resistance	$\geq 100M \Omega$
Withstand voltage	AC 500V(50Hz) 1min
Actuating Force	3~20N
Life	5000Time



MODEL NO.	TSH-3874	TSH-3873	TSH-3873A
SCHEMATIC			

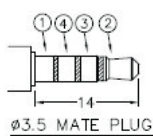
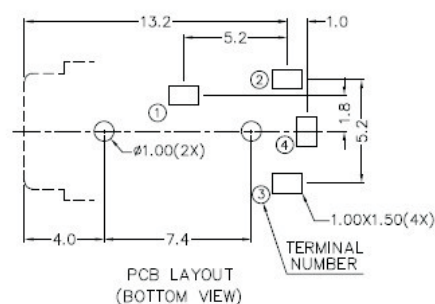
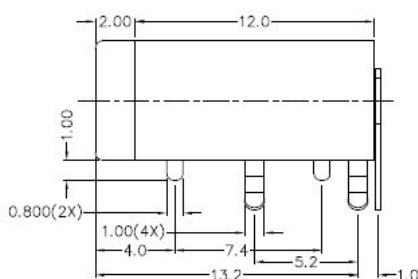
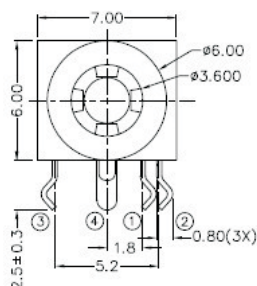

*** MATERIAL**

TERMINAL 1 : COPPER ALLOY
 TERMINAL 2 : COPPER ALLOY
 TERMINAL 3 : COPPER ALLOY
 TERMINAL 10 : BRASS
 HOUSING : PA66


ORDER INFORMATION
Product No. : KLS1-TSJ-3.5-017A
Pos. NO.
Series NO.

3.5mm Mono Jack * Stereo Jack Series

KLS1-SSJ-3.5-001A (Dip Stereo Jack)



MODEL NO.	TSH-3724	TSH-3723
SCHEMATIC		

*** MATERIAL**

TERMINAL 1 : COPPER ALLOY
TERMINAL 2 : COPPER ALLOY
TERMINAL 3 : COPPER ALLOY
TERMINAL 4 : COPPER ALLOY
HOUSING : PBT

ORDER INFORMATION

Product No. : KLS1-SSJ-3.5-001A

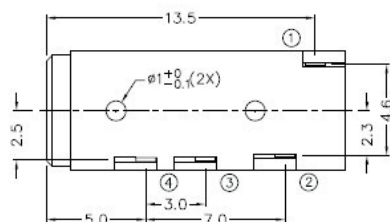
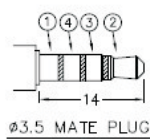
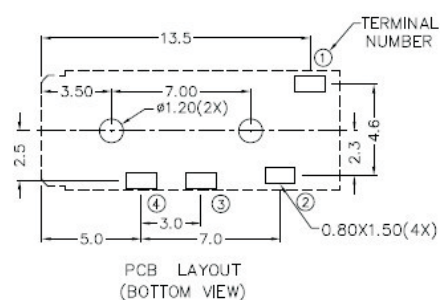
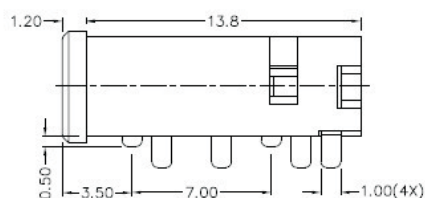
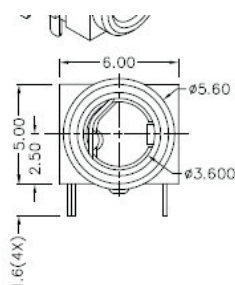
Pos. NO. _____

Series NO. _____

3.5mm Mono Jack * Stereo Jack Series

KLS1-SSJ-3.5-002A (Dip Stereo Jack)

Housing Material / Center Pin Material	PA66 / Brass
Rated Load	DC 12V 1A Max
Contact resistance	$\leq 0.03 \Omega$
Insulation resistance	$\geq 100M \Omega$
Withstand voltage	AC 500V(50Hz) 1min
Actuating Force	3~20N
Life	5000Time



MODEL NO.	TSH-3744	TSH-3743
SCHEMATIC		

* MATERIAL

TERMINAL 1 : COPPER ALLOY
TERMINAL 2 : COPPER ALLOY
TERMINAL 3 : COPPER ALLOY
TERMINAL 4 : COPPER ALLOY
HOUSING : PA66

ORDER INFORMATION

Product No. : KLS1-SSJ-3.5-002A

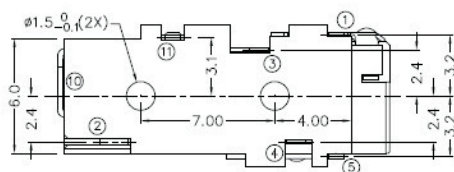
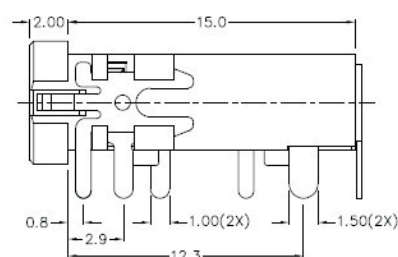
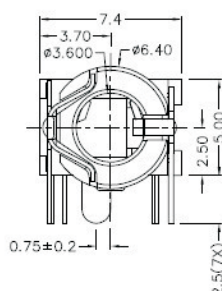
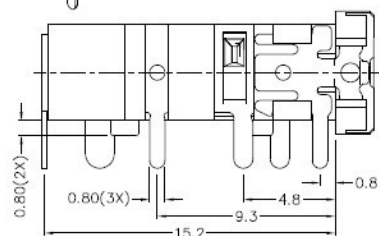
Pos. NO. _____

Series NO. _____

3.5mm Mono Jack * Stereo Jack Series

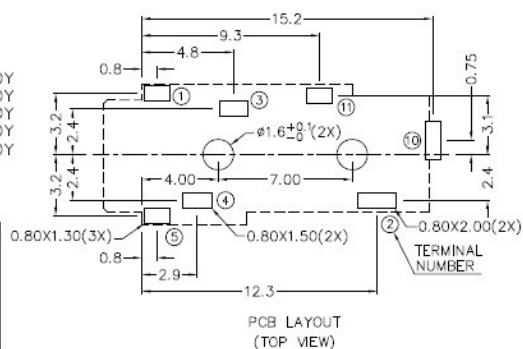
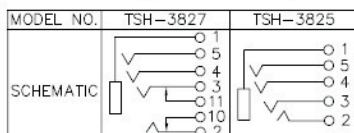
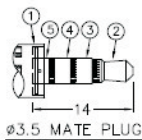
KLS1-SSJ-3.5-003A (Dip Stereo Jack)

Housing Material / Center Pin Material	PA66 / Brass
Rated Load	DC 12V 1A Max
Contact resistance	≤ 0.03 Ω
Insulation resistance	≥ 100M Ω
Withstand voltage	AC 500V(50Hz) 1min
Actuating Force	3~20N
Life	5000Time



* MATERIAL

TERMINAL 1 : COPPER ALLOY
 TERMINAL 2 : COPPER ALLOY
 TERMINAL 3 : COPPER ALLOY
 TERMINAL 4 : COPPER ALLOY
 TERMINAL 5 : COPPER ALLOY
 TERMINAL 10 : BRASS
 TERMINAL 11 : BRASS
 HOUSING : PA66



ORDER INFORMATION

Product No. : KLS1-SSJ-3.5-003A

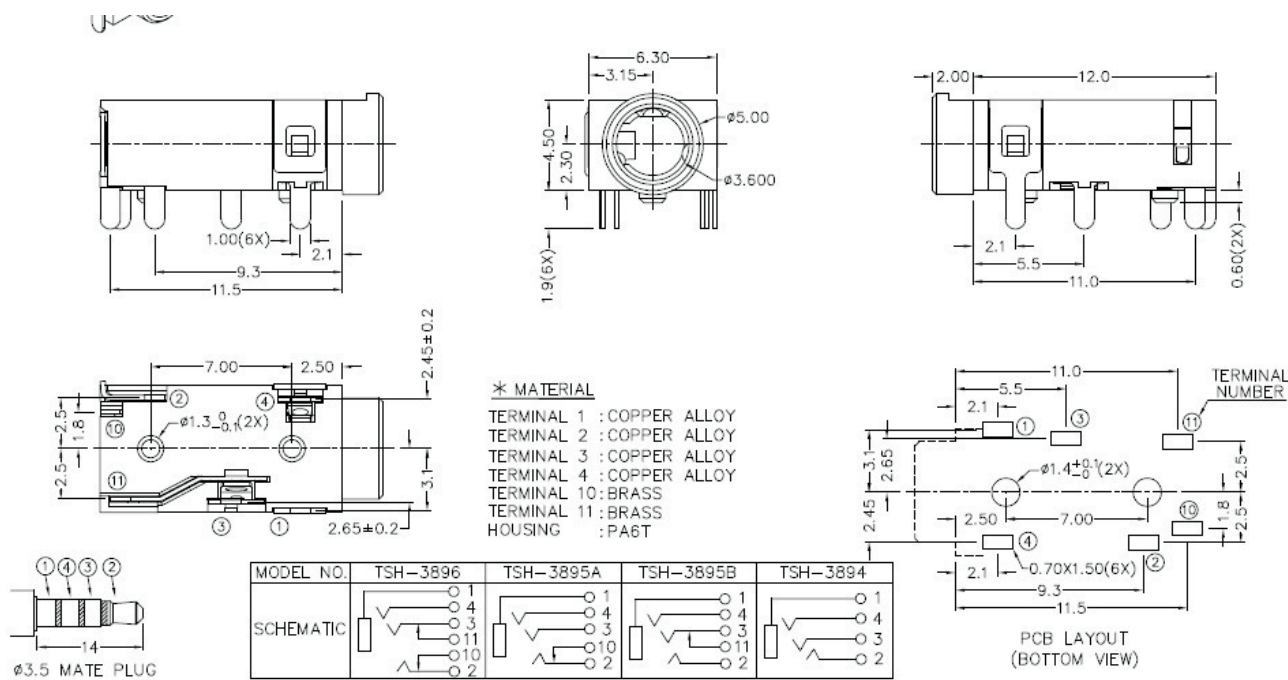
Pos. NO.

Series NO.

3.5mm Mono Jack * Stereo Jack Series

KLS1-SSJ-3.5-004A (Dip Stereo Jack)

Housing Material / Center Pin Material	PA66 / Brass
Rated Load	DC 12V 1A Max
Contact resistance	$\leq 0.03 \Omega$
Insulation resistance	$\geq 100M \Omega$
Withstand voltage	AC 500V(50Hz) 1min
Actuating Force	3~20N
Life	5000Time



ORDER INFORMATION

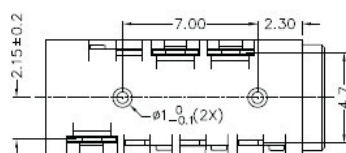
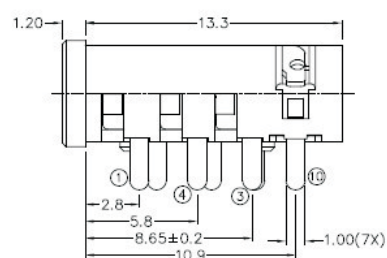
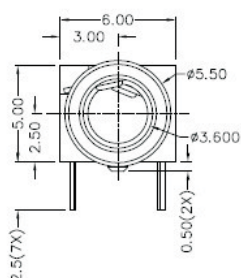
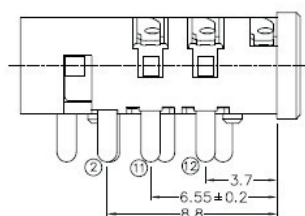
Product No. : KLS1-SSJ-3.5-004A

Pos. NO.

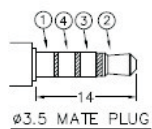
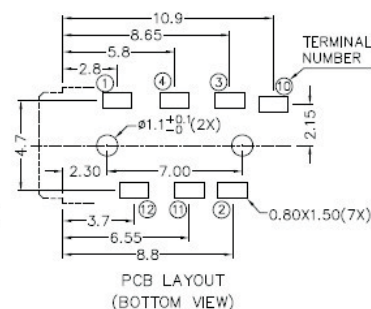
Series NO.

3.5mm Mono Jack * Stereo Jack Series
KLS1-SSJ-3.5-005A (Dip Stereo Jack)

Housing Material / Center Pin Material	PA66 / Brass
Rated Load	DC 12V 1A Max
Contact resistance	$\leq 0.03 \Omega$
Insulation resistance	$\geq 100M \Omega$
Withstand voltage	AC 500V(50Hz) 1min
Actuating Force	3~20N
Life	5000Time


*** MATERIAL**

TERMINAL 1 : COPPER ALLOY
 TERMINAL 2 : COPPER ALLOY
 TERMINAL 3 : COPPER ALLOY
 TERMINAL 4 : COPPER ALLOY
 TERMINAL 10 : BRASS
 TERMINAL 11 : BRASS
 TERMINAL 12 : BRASS
 HOUSING : PA66



MODEL NO.	TSH-3917	TSH-3916A	TSH-3915A	TSH-3914	TSH-3915
SCHEMATIC					

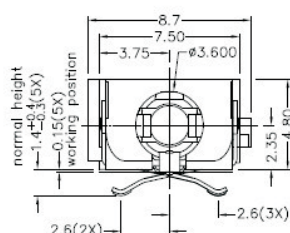
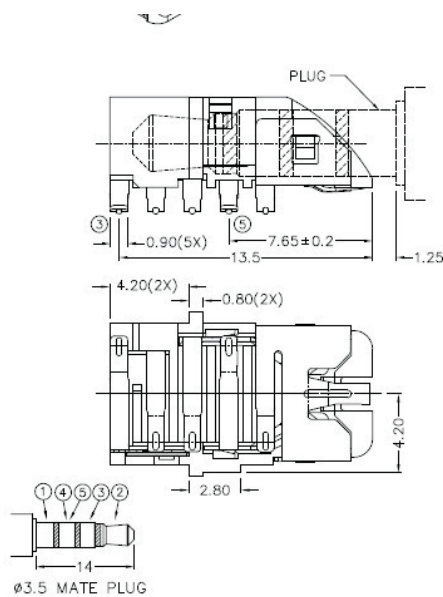
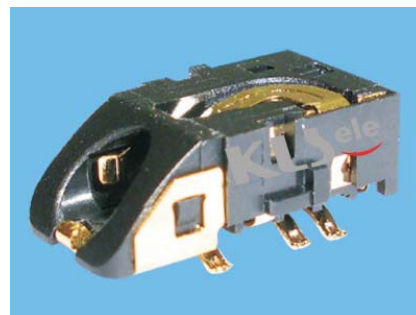
ORDER INFORMATION
Product No. : KLS1-SSJ-3.5-005A

Pos. NO.

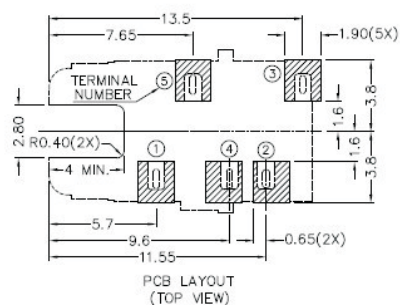
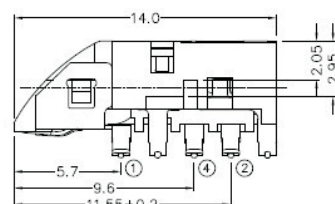
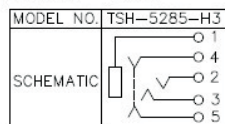
Series NO.

3.5mm Mono Jack * Stereo Jack Series
KLS1-SSJ-3.5-006A (Dip Stereo Jack)

Housing Material / Center Pin Material	PA6T / Brass
Rated Load	DC 12V 1A Max
Contact resistance	$\leq 0.03 \Omega$
Insulation resistance	$\geq 100M \Omega$
Withstand voltage	AC 500V(50Hz) 1min
Actuating Force	3~20N
Life	5000Time


*** MATERIAL**

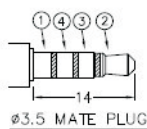
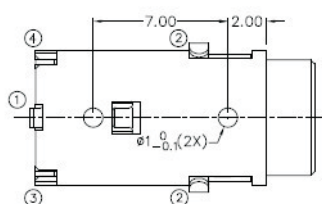
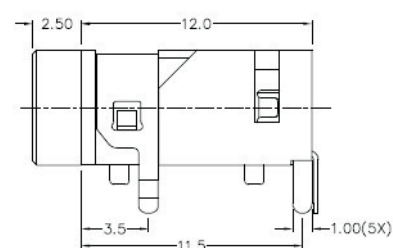
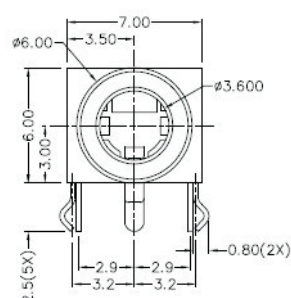
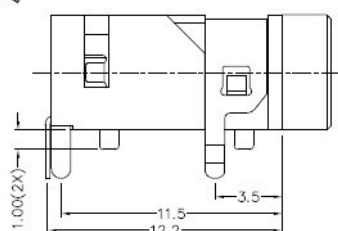
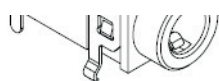
TERMINAL 1 : COPPER ALLOY
 TERMINAL 2 : COPPER ALLOY
 TERMINAL 3 : COPPER ALLOY
 TERMINAL 4 : COPPER ALLOY
 TERMINAL 5 : COPPER ALLOY
 SPRING : COPPER ALLOY
 HOUSING : PA6T


KLS1-SSJ-3.5-006B:

ORDER INFORMATION
Product No. : KLS1-SSJ-3.5-006A
Pos. NO.
Series NO.

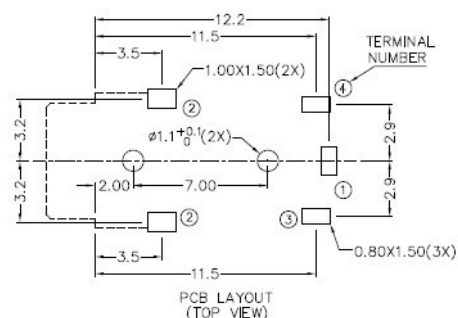
3.5mm Mono Jack * Stereo Jack Series
KLS1-SSJ-3.5-007A (Dip Stereo Jack)

Housing Material / Center Pin Material	PA66 / Brass
Rated Load	DC 12V 1A Max
Contact resistance	$\leq 0.03 \Omega$
Insulation resistance	$\geq 100M \Omega$
Withstand voltage	AC 500V(50Hz) 1min
Actuating Force	3~20N
Life	5000Time


*** MATERIAL**

TERMINAL 1 : COPPER ALLOY
 TERMINAL 2 : COPPER ALLOY
 TERMINAL 3 : COPPER ALLOY
 TERMINAL 4 : COPPER ALLOY
 HOUSING : PA66

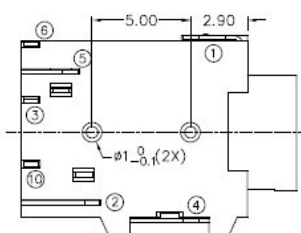
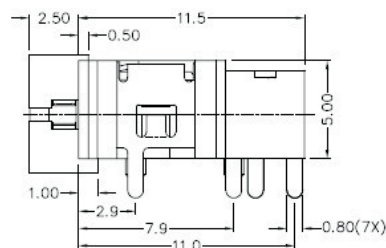
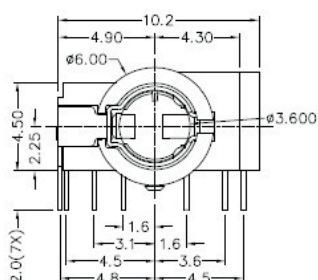
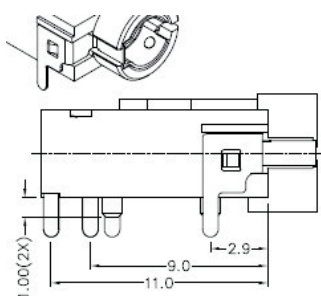
MODEL NO.	TSH-5114
SCHEMATIC	


ORDER INFORMATION
Product No. : KLS1-SSJ-3.5-007A
Pos. NO.
Series NO.

3.5mm Mono Jack * Stereo Jack Series

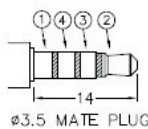
KLS1-SSJ-3.5-008A (Dip Stereo Jack)

Housing Material / Center Pin Material	PA66 / Brass
Rated Load	DC 12V 1A Max
Contact resistance	$\leq 0.03 \Omega$
Insulation resistance	$\geq 100M \Omega$
Withstand voltage	AC 500V(50Hz) 1min
Actuating Force	3~20N
Life	5000Time

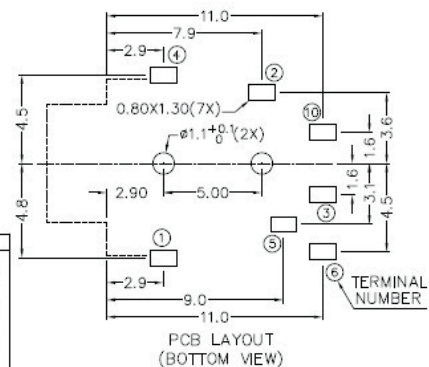


* MATERIAL

TERMINAL 1 : COPPER ALLOY
TERMINAL 2 : COPPER ALLOY
TERMINAL 3 : COPPER ALLOY
TERMINAL 4 : COPPER ALLOY
TERMINAL 5 : COPPER ALLOY
TERMINAL 6 : COPPER ALLOY
TERMINAL 10 : BRASS
HOUSING : PA66



MODEL NO.	TSH-3997	TSH-3996	TSH-3995	TSH-3994
SCHEMATIC				



ORDER INFORMATION

Product No. : KLS1-SSJ-3.5-008A

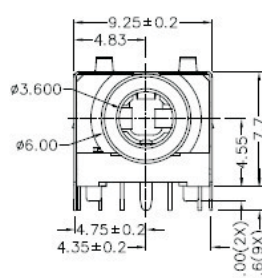
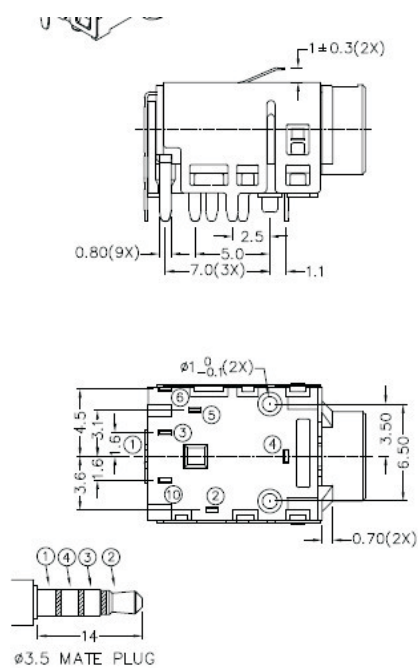
Pos. NO. _____

Series NO. _____

3.5mm Mono Jack * Stereo Jack Series

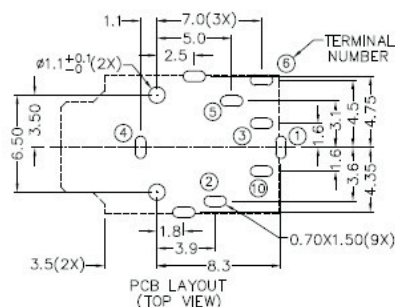
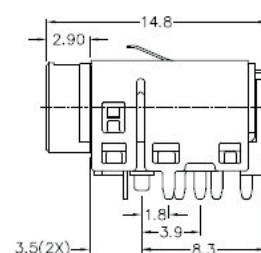
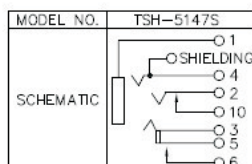
KLS1-SSJ-3.5-009A (Dip Stereo Jack)

Housing Material / Center Pin Material	PA66 / Brass
Rated Load	DC 12V 1A Max
Contact resistance	$\leq 0.03 \Omega$
Insulation resistance	$\geq 100M \Omega$
Withstand voltage	AC 500V(50Hz) 1min
Actuating Force	3~20N
Life	5000Time



* MATERIAL

TERMINAL 1 : COPPER ALLOY
 TERMINAL 2 : COPPER ALLOY
 TERMINAL 3 : COPPER ALLOY
 TERMINAL 4 : COPPER ALLOY
 TERMINAL 5 : COPPER ALLOY
 TERMINAL 6 : COPPER ALLOY
 TERMINAL 10: BRASS
 SHIELD : STAINLESS STEEL
 HOUSING : PA6T



ORDER INFORMATION

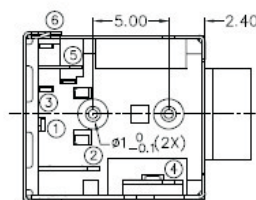
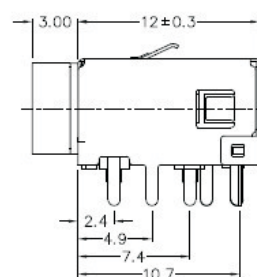
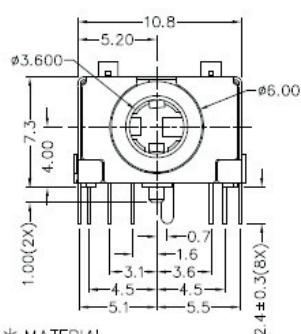
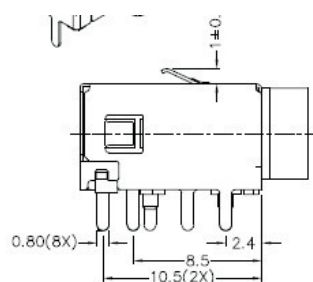
Product No. : KLS1-SSJ-3.5-009A

Pos. NO. _____

Series NO. _____

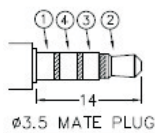
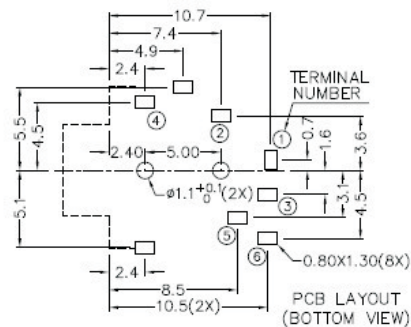
3.5mm Mono Jack * Stereo Jack Series
KLS1-SSJ-3.5-010A (Dip Stereo Jack)

Housing Material / Center Pin Material	PA66 / Brass
Rated Load	DC 12V 1A Max
Contact resistance	$\leq 0.03 \Omega$
Insulation resistance	$\geq 100M \Omega$
Withstand voltage	AC 500V(50Hz) 1min
Actuating Force	3~20N
Life	5000Time


*** MATERIAL**

TERMINAL 1 : COPPER ALLOY
 TERMINAL 2 : COPPER ALLOY
 TERMINAL 3 : COPPER ALLOY
 TERMINAL 4 : COPPER ALLOY
 TERMINAL 5 : COPPER ALLOY
 TERMINAL 6 : COPPER ALLOY
 SHIELD : COPPER ALLOY
 BUSHING : BRASS
 HOUSING : PA66

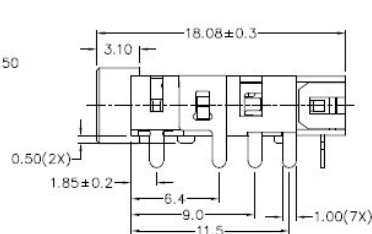
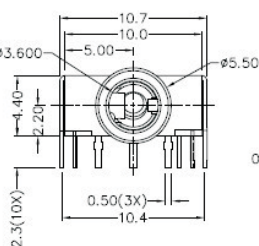
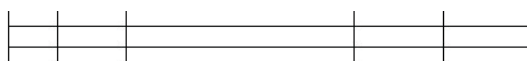
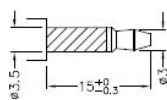
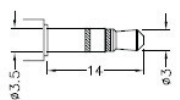
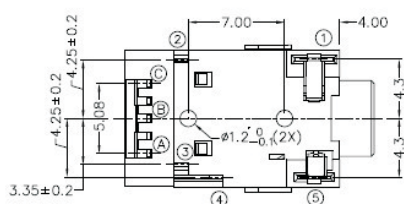
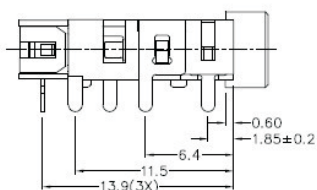
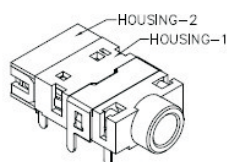
MODEL NO.	TSH-5026S	TSH-5024S
SCHMATIC		


ORDER INFORMATION
Product No. : KLS1-SSJ-3.5-010A
Pos. NO.
Series NO.

3.5mm Mono Jack * Stereo Jack Series

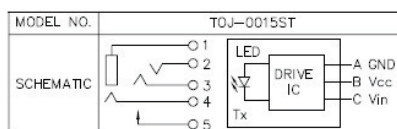
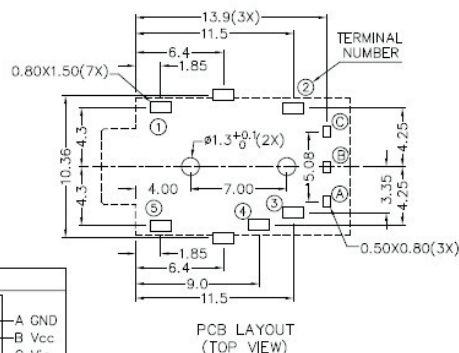
KLS1-SJO-3.5-001A (Stereo Jack/OPTO)

Housing Material / Center Pin Material	PA9T / Brass
Rated Load	DC 12V 1A Max
Contact resistance	≤ 0.03 Ω
Insulation resistance	≥ 100M Ω
Withstand voltage	AC 500V(50Hz) 1min
Actuating Force	3~20N
Life	5000Time



* MATERIAL

TERMINAL 1 : COPPER ALLOY
 TERMINAL 2 : COPPER ALLOY
 TERMINAL 3 : COPPER ALLOY
 TERMINAL 4 : COPPER ALLOY
 TERMINAL 5 : COPPER ALLOY
 SHIELD : BRASS
 HOUSING-1 : PA9T
 HOUSING-2 : PA9T
 COVER : PA9T
 DRIVE IC :



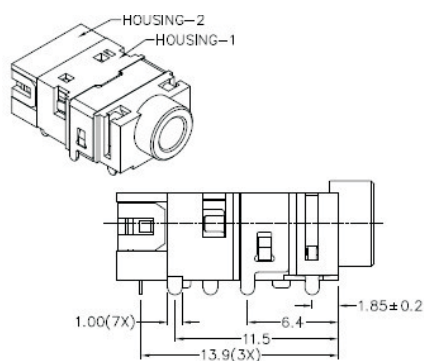
ORDER INFORMATION

Product No. : KLS1-SJO-3.5-001A**Pos. NO.****Series NO.**

3.5mm Mono Jack * Stereo Jack Series

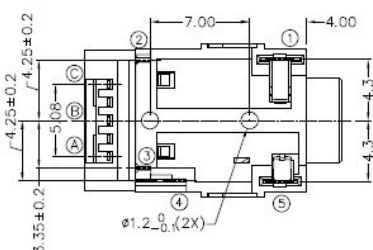
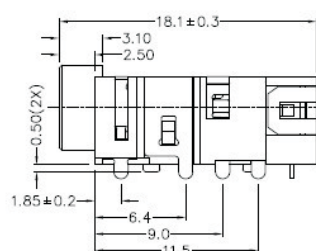
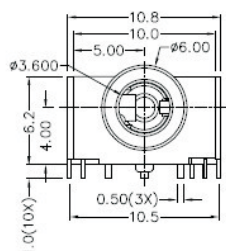
KLS1-SJO-3.5-002A (Stereo Jack/OPTO)

Housing Material / Center Pin Material	PA9T / Brass
Rated Load	DC 12V 1A Max
Contact resistance	$\leq 0.03 \Omega$
Insulation resistance	$\geq 100M \Omega$
Withstand voltage	AC 500V(50Hz) 1min
Actuating Force	3~20N
Life	5000Time



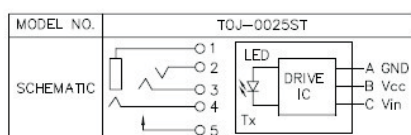
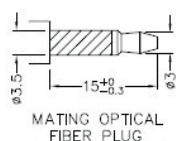
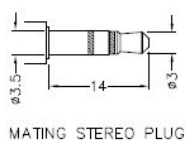
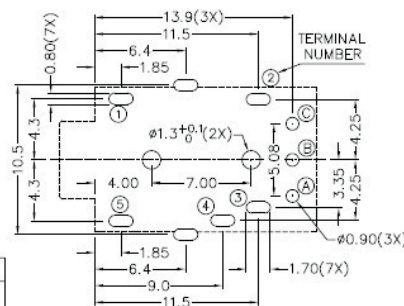
RoHS
Compliant

MODEL NO.	TERMINAL	TERMINAL	TERMINAL	TERMINAL



* MATERIAL

TERMINAL 1 : COPPER ALLOY
TERMINAL 2 : COPPER ALLOY
TERMINAL 3 : COPPER ALLOY
TERMINAL 4 : COPPER ALLOY
TERMINAL 5 : COPPER ALLOY
SHIELD : BRASS
HOUSING-1 : PA9T
HOUSING-2 : PA9T
COVER : PA9T
DRIVE IC :



ORDER INFORMATION

Product No. : KLS1-SJO-3.5-002A

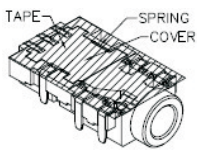
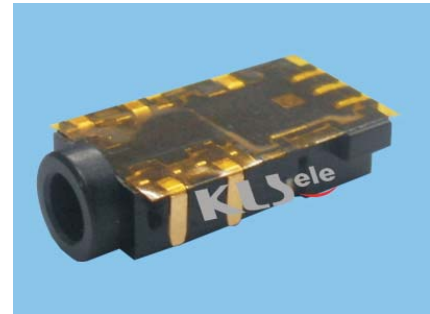
Pos. NO. _____

Series NO. _____

3.5mm Mono Jack * Stereo Jack Series

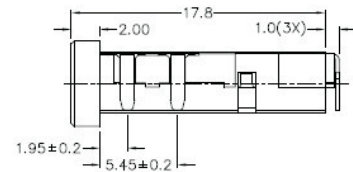
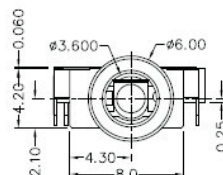
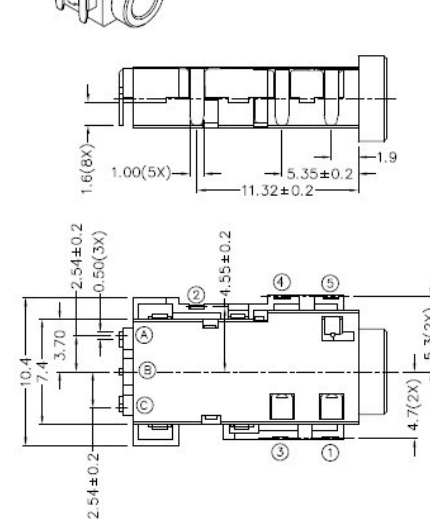
KLS1-SJO-3.5-003A (Stereo Jack/OPTO)

Housing Material / Center Pin Material	PA9T / Brass
Rated Load	DC 12V 1A Max
Contact resistance	$\leq 0.03 \Omega$
Insulation resistance	$\geq 100M \Omega$
Withstand voltage	AC 500V(50Hz) 1min
Actuating Force	3~20N
Life	5000Time



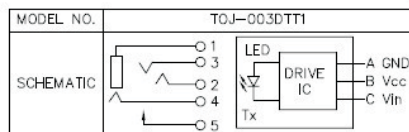
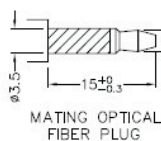
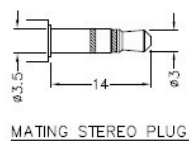
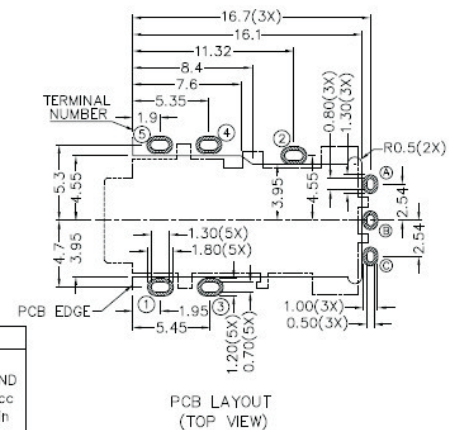
RoHS
Compliant

ZONE	SYMBOL	REVISION	APPROVAL	DATE



* MATERIAL

TERMINAL 1 : COPPER ALLOY
 TERMINAL 2 : COPPER ALLOY
 TERMINAL 3 : COPPER ALLOY
 TERMINAL 4 : COPPER ALLOY
 TERMINAL 5 : COPPER ALLOY
 SPRING : STAINLESS STEEL
 HOUSING : PA9T
 COVER : PA9T
 TAPE : POLYIMIDE
 DRIVE IC :



ORDER INFORMATION

Product No. : KLS1-SJO-3.5-003A

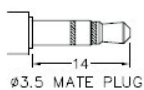
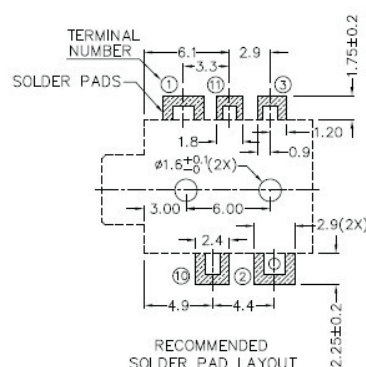
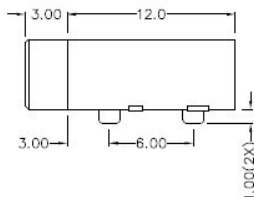
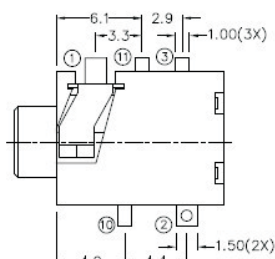
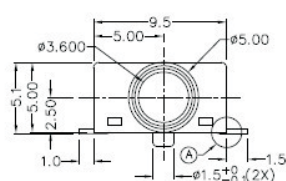
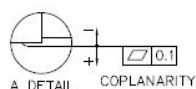
Pos. NO.

Series NO.

3.5mm Mono Jack * Stereo Jack Series

KLS1-TPJ-3.5-001A (SMD Stereo Jack)

Housing Material / Center Pin Material	PA6T / Brass
Rated Load	DC 12V 1A Max
Contact resistance	$\leq 0.03 \Omega$
Insulation resistance	$\geq 100M \Omega$
Withstand voltage	AC 500V(50Hz) 1min
Actuating Force	3~20N
Life	5000Time



MODEL NO.	TSH-3675D	TSH-3674AD	TSH-3674BD	TSH-3673D	TSH-3673AD
SCHEMATIC					

*MATERIAL

TERMINAL 1 : COPPER ALLOY
TERMINAL 2 : COPPER ALLOY
TERMINAL 3 : COPPER ALLOY
TERMINAL 10 : BRASS
TERMINAL 11 : BRASS
HOUSING : PA6T
COVER : PA6T

ORDER INFORMATION

Product No. : KLS1-TPJ-3.5-001A

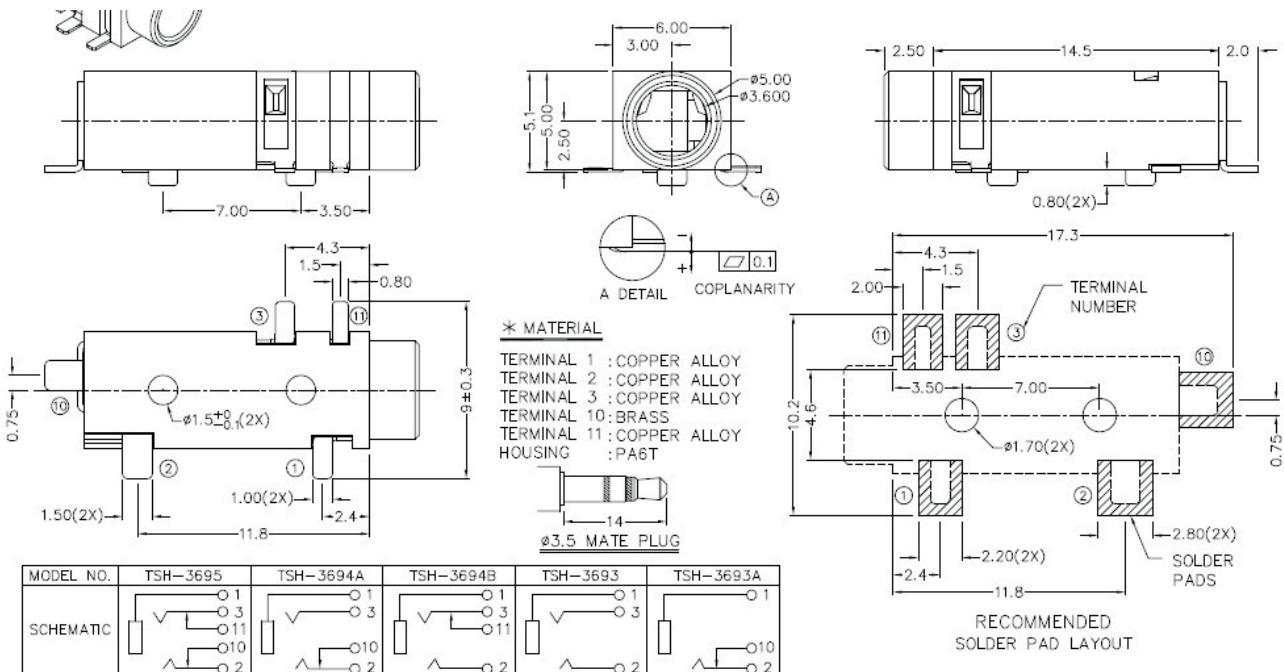
Pos. NO. _____

Series NO. _____

3.5mm Mono Jack * Stereo Jack Series

KLS1-TPJ-3.5-002A (SMD Stereo Jack)

Housing Material / Center Pin Material	PA6T / Brass
Rated Load	DC 12V 1A Max
Contact resistance	$\leq 0.03 \Omega$
Insulation resistance	$\geq 100M \Omega$
Withstand voltage	AC 500V(50Hz) 1min
Actuating Force	3~20N
Life	5000Time



ORDER INFORMATION

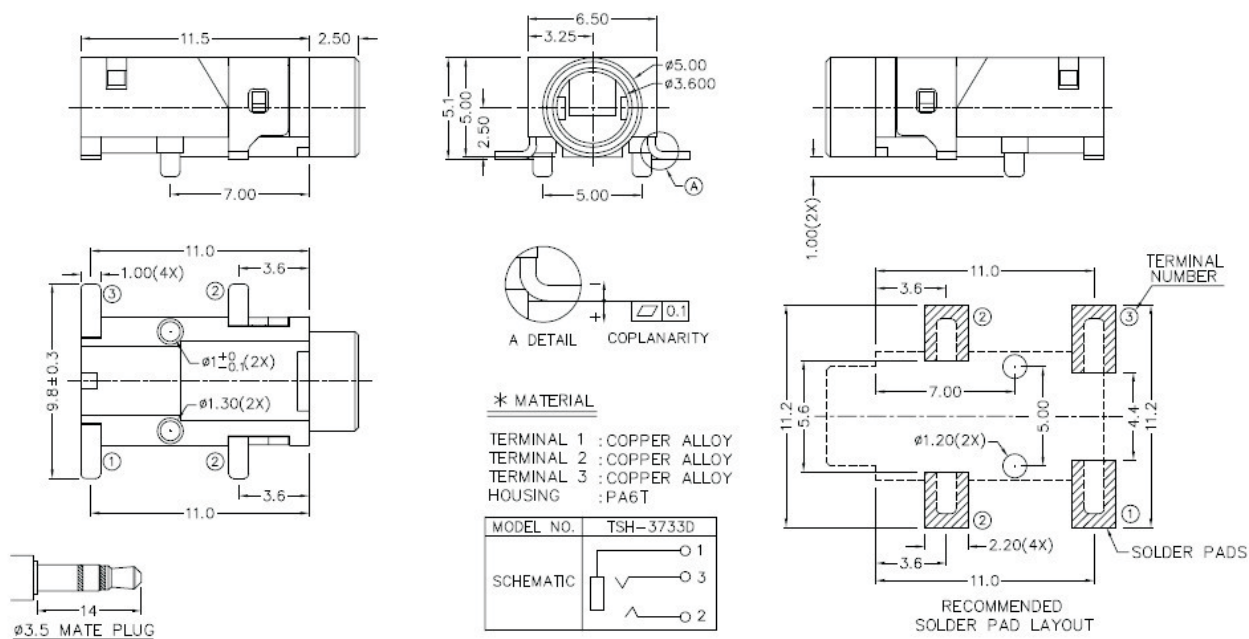
Product No. : KLS1-TPJ-3.5-002A

Pos. NO.

Series NO.

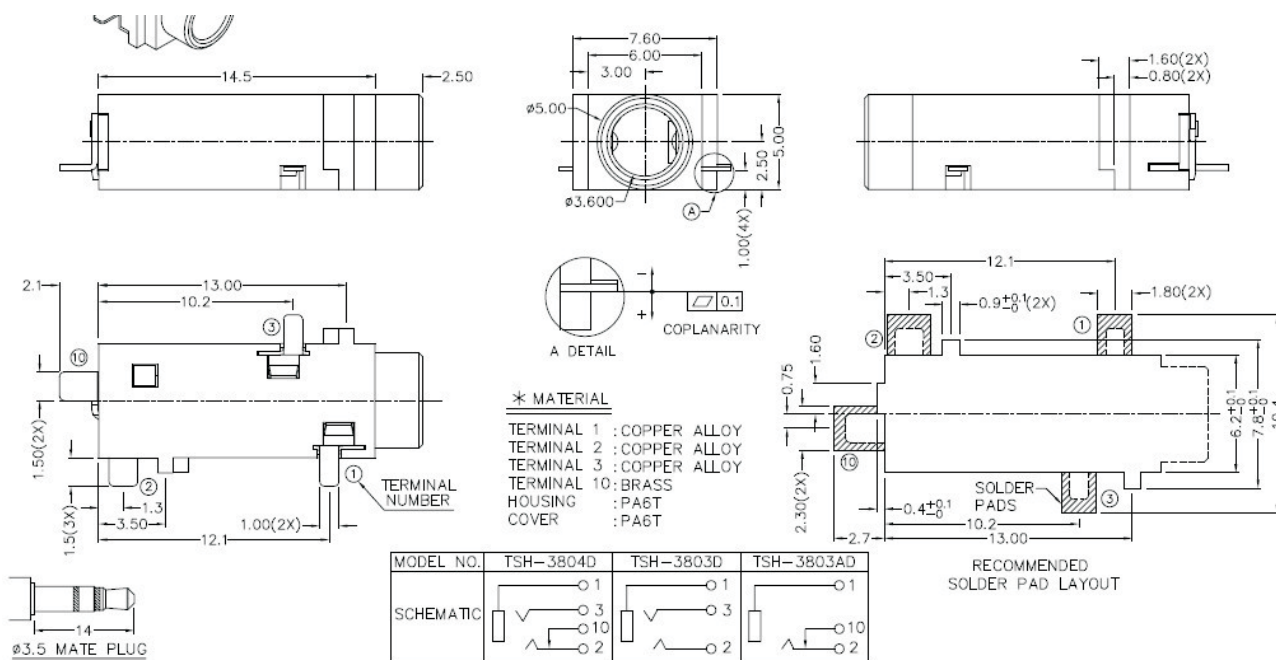
3.5mm Mono Jack * Stereo Jack Series
KLS1-TPJ-3.5-003A (SMD Stereo Jack)

Housing Material / Center Pin Material	PA6T / Brass
Rated Load	DC 12V 1A Max
Contact resistance	$\leq 0.03 \Omega$
Insulation resistance	$\geq 100M \Omega$
Withstand voltage	AC 500V(50Hz) 1min
Actuating Force	3~20N
Life	5000Time


ORDER INFORMATION
Product No. : KLS1-TPJ-3.5-003A
Pos. NO.
Series NO.

3.5mm Mono Jack * Stereo Jack Series
KLS1-TPJ-3.5-004A (SMD Stereo Jack)

Housing Material / Center Pin Material	PA6T / Brass
Rated Load	DC 12V 1A Max
Contact resistance	$\leq 0.03 \Omega$
Insulation resistance	$\geq 100M \Omega$
Withstand voltage	AC 500V(50Hz) 1min
Actuating Force	3~20N
Life	5000Time

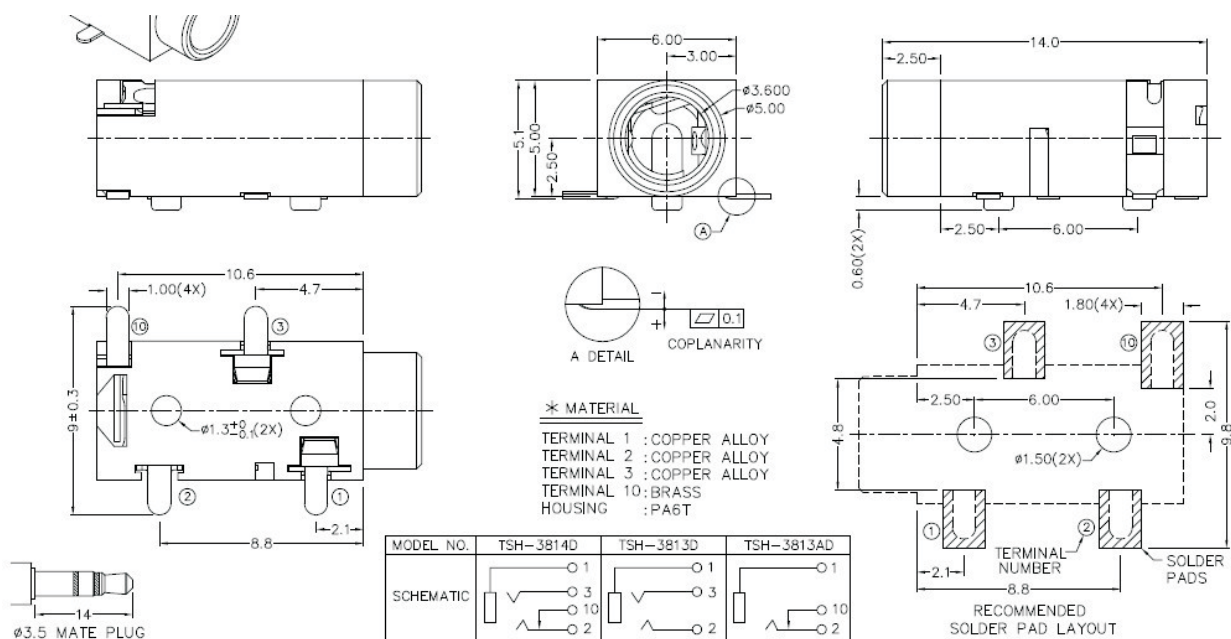

ORDER INFORMATION
Product No. : KLS1-TPJ-3.5-004A

Pos. NO. _____

Series NO. _____

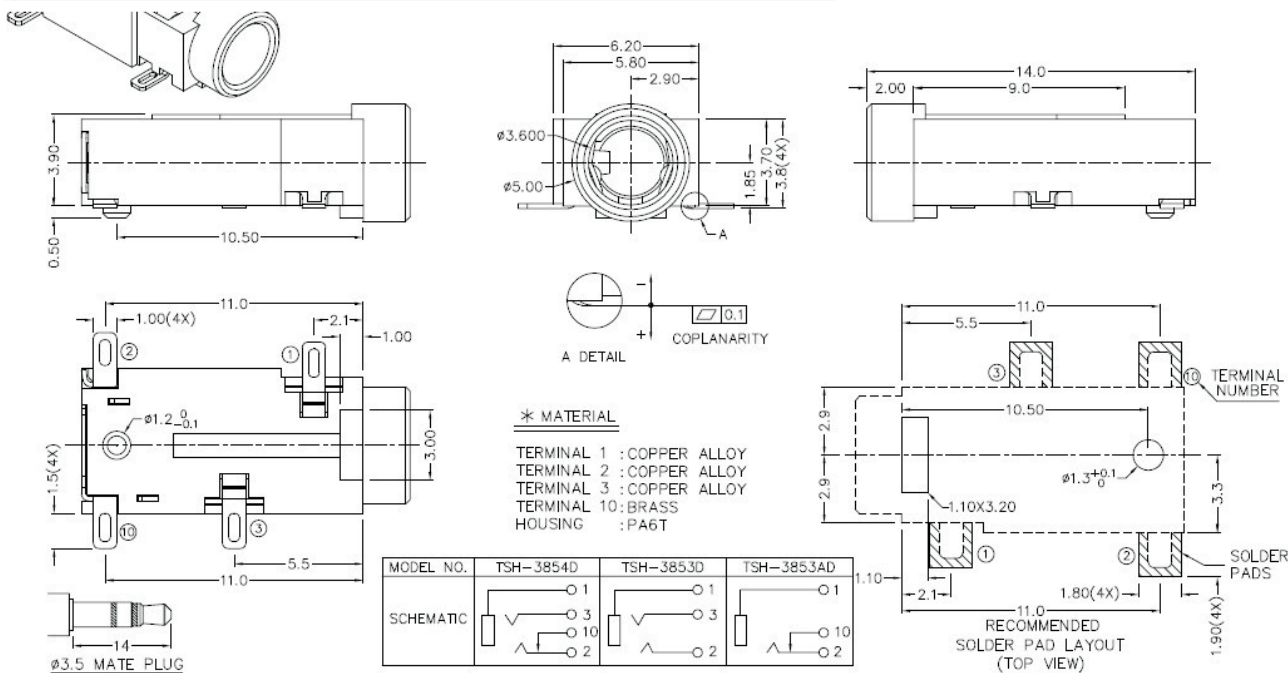
3.5mm Mono Jack * Stereo Jack Series
KLS1-TPJ-3.5-005A (SMD Stereo Jack)

Housing Material / Center Pin Material	PA6T / Brass
Rated Load	DC 12V 1A Max
Contact resistance	$\leq 0.03 \Omega$
Insulation resistance	$\geq 100M \Omega$
Withstand voltage	AC 500V(50Hz) 1min
Actuating Force	3~20N
Life	5000Time


ORDER INFORMATION
Product No. : KLS1-TPJ-3.5-005A
Pos. NO.
Series NO.

3.5mm Mono Jack * Stereo Jack Series
KLS1-TPJ-3.5-006A (SMD Stereo Jack)

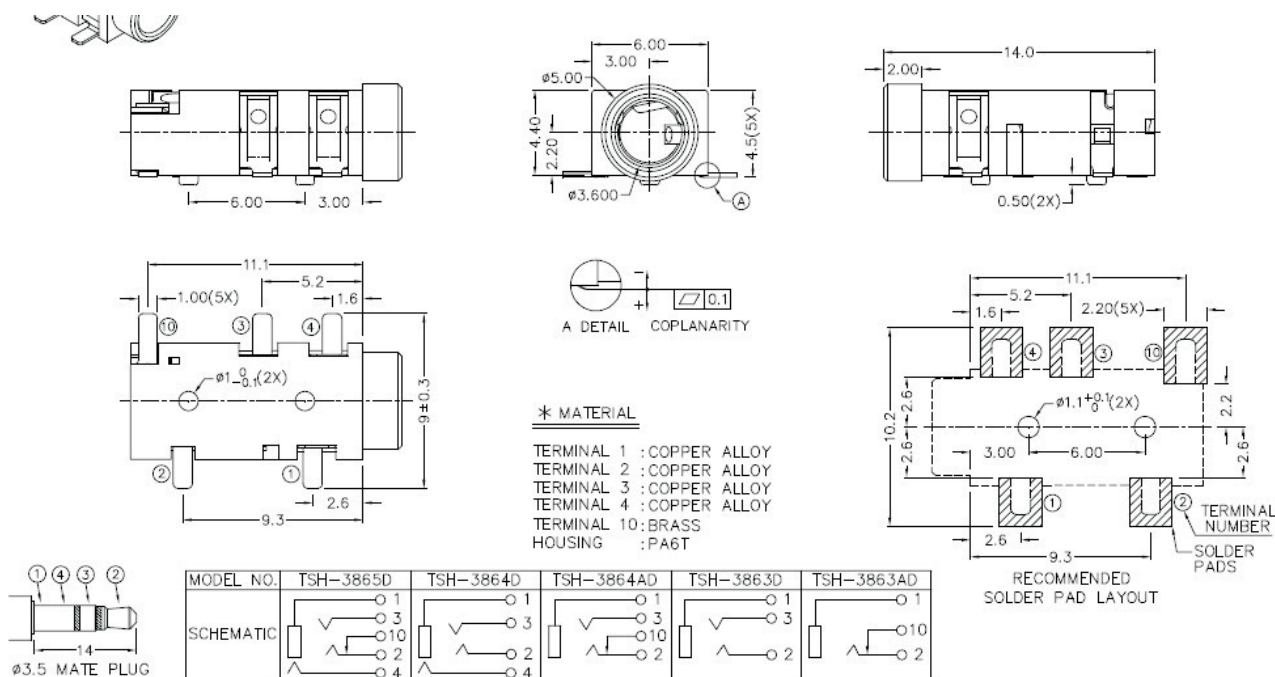
Housing Material / Center Pin Material	PA6T / Brass
Rated Load	DC 12V 1A Max
Contact resistance	$\leq 0.03 \Omega$
Insulation resistance	$\geq 100M \Omega$
Withstand voltage	AC 500V(50Hz) 1min
Actuating Force	3~20N
Life	5000Time


KLS1-TPJ-3.5-006B:

ORDER INFORMATION
Product No. : KLS1-TPJ-3.5-006A
Pos. NO.
Series NO.

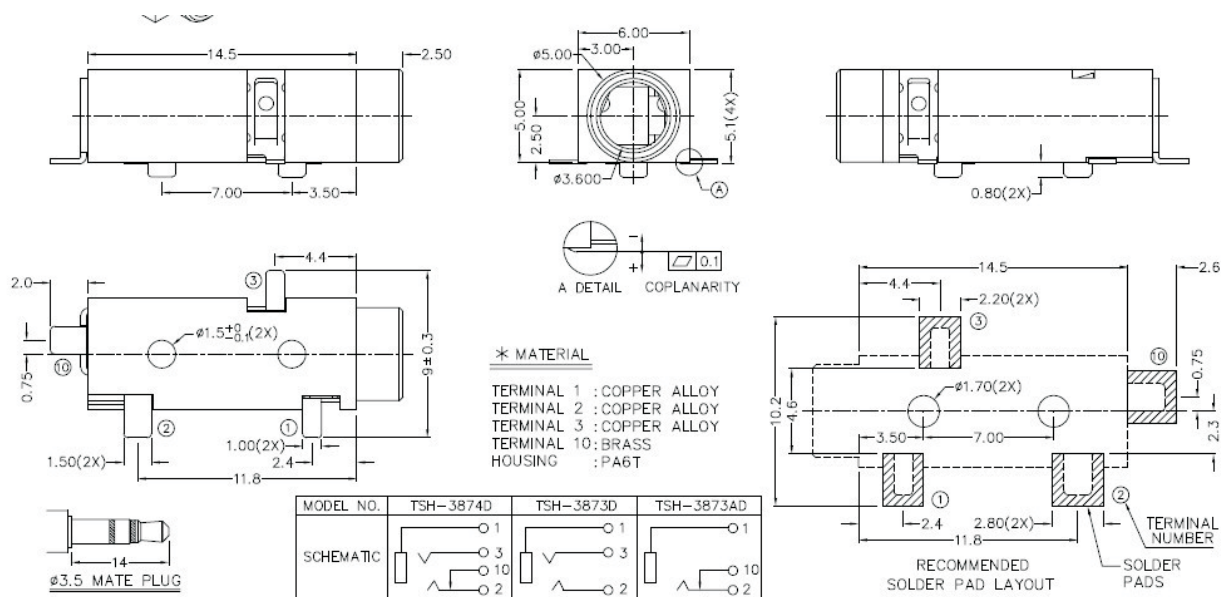
3.5mm Mono Jack * Stereo Jack Series
KLS1-TPJ-3.5-007A (SMD Stereo Jack)

Housing Material / Center Pin Material	PA6T / Brass
Rated Load	DC 12V 1A Max
Contact resistance	$\leq 0.03 \Omega$
Insulation resistance	$\geq 100M \Omega$
Withstand voltage	AC 500V(50Hz) 1min
Actuating Force	3~20N
Life	5000Time


ORDER INFORMATION
Product No. : KLS1-TPJ-3.5-007A
Pos. NO.
Series NO.

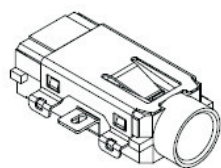
3.5mm Mono Jack * Stereo Jack Series
KLS1-TPJ-3.5-008A (SMD Stereo Jack)

Housing Material / Center Pin Material	PA6T / Brass
Rated Load	DC 12V 1A Max
Contact resistance	$\leq 0.03 \Omega$
Insulation resistance	$\geq 100M \Omega$
Withstand voltage	AC 500V(50Hz) 1min
Actuating Force	3~20N
Life	5000Time

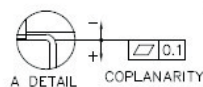
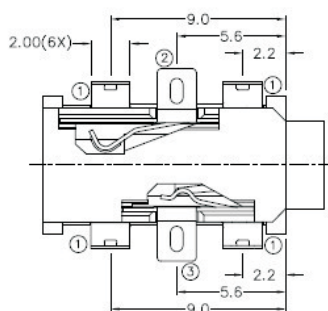
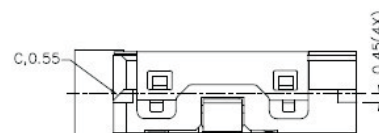
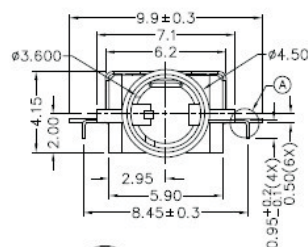
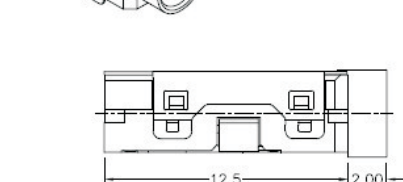

ORDER INFORMATION
Product No. : KLS1-TPJ-3.5-008A
Pos. NO.
Series NO.

3.5mm Mono Jack * Stereo Jack Series
KLS1-TPJ-3.5-009A (SMD Stereo Jack)

Housing Material / Center Pin Material	PA6T / Brass
Rated Load	DC 12V 1A Max
Contact resistance	$\leq 0.03 \Omega$
Insulation resistance	$\geq 100M \Omega$
Withstand voltage	AC 500V(50Hz) 1min
Actuating Force	3~20N
Life	5000Time


 RoHS
 Compliant

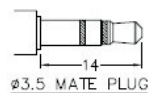
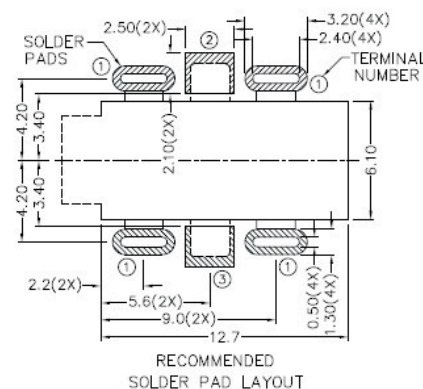
		ADDED INDICATION OF COPLANARITY	J.X.KUANG	16-



* MATERIAL

 TERMINAL 1 : STAINLESS STEEL
 TERMINAL 2 : COPPER ALLOY
 TERMINAL 3 : COPPER ALLOY
 HOUSING : PA6T

MODEL NO.	TSH-5033D
SCHEMATIC	

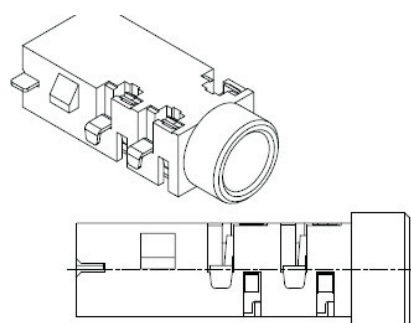

ORDER INFORMATION
Product No. : KLS1-TPJ-3.5-009A

Pos. NO.

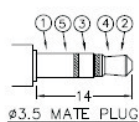
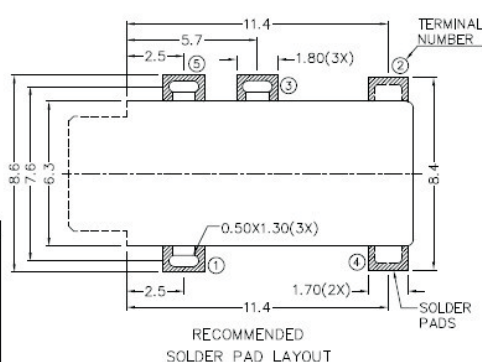
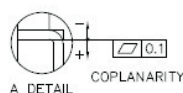
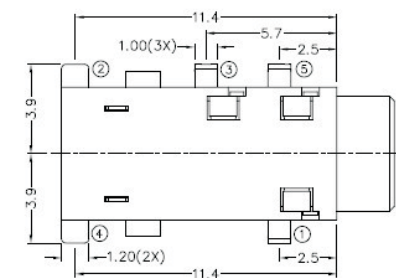
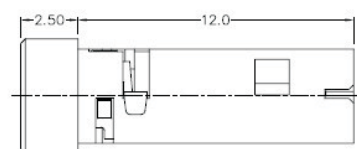
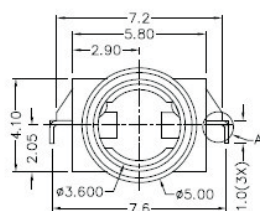
Series NO.

3.5mm Mono Jack * Stereo Jack Series
KLS1-TPJ-3.5-010A (SMD Stereo Jack)

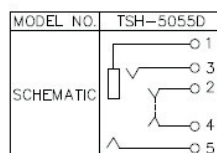
Housing Material / Center Pin Material	PA6T / Brass
Rated Load	DC 12V 1A Max
Contact resistance	$\leq 0.03 \Omega$
Insulation resistance	$\geq 100M \Omega$
Withstand voltage	AC 500V(50Hz) 1min
Actuating Force	3~20N
Life	5000Time


 RoHS
 Compliant

		ADDED INDICATION OF COPLANARITY	J.X.KUANG	16-12-20



* MATERIAL

 TERMINAL 1 : COPPER ALLOY
 TERMINAL 2 : COPPER ALLOY
 TERMINAL 3 : COPPER ALLOY
 TERMINAL 4 : COPPER ALLOY
 TERMINAL 5 : COPPER ALLOY
 HOUSING : PA6T

ORDER INFORMATION
Product No. : KLS1-TPJ-3.5-010A

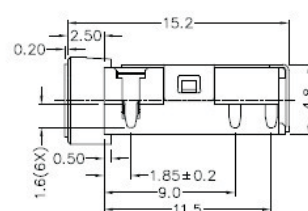
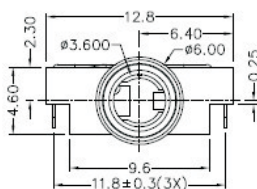
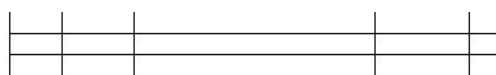
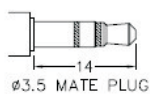
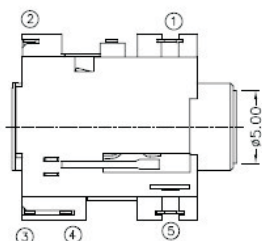
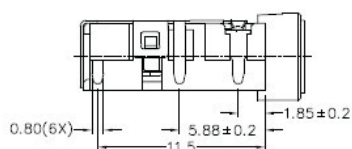
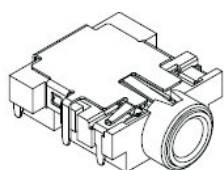
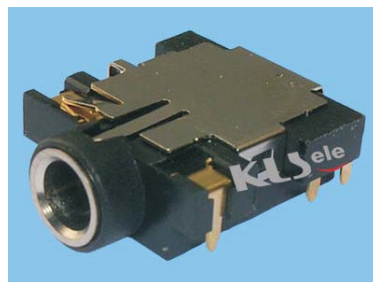
Pos. NO.

Series NO.

3.5mm Mono Jack * Stereo Jack Series

KLS1-TPJ-3.5-011A (SMD Stereo Jack)

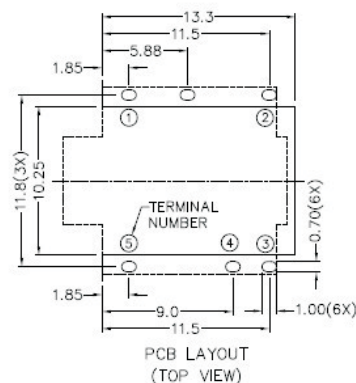
Housing Material / Center Pin Material	PA6T / Brass
Rated Load	DC 12V 1A Max
Contact resistance	≤ 0.03 Ω
Insulation resistance	≥ 100M Ω
Withstand voltage	AC 500V(50Hz) 1min
Actuating Force	3~20N
Life	5000Time



* MATERIAL

TERMINAL 1	: COPPER ALLOY
TERMINAL 2	: COPPER ALLOY
TERMINAL 3	: COPPER ALLOY
TERMINAL 4	: COPPER ALLOY
TERMINAL 5	: COPPER ALLOY
SHIELD	: COPPER ALLOY
BUSHING	: BRASS
HOUSING	: PBT

MODEL NO.	TSH-5095DS
SCHEMATIC	



ORDER INFORMATION

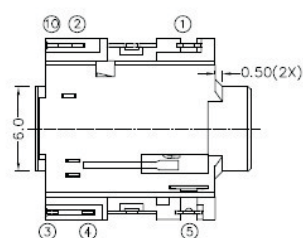
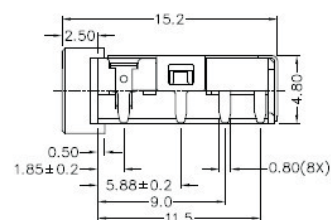
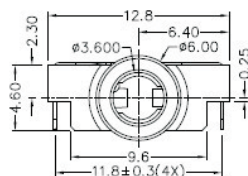
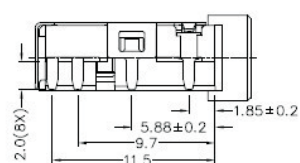
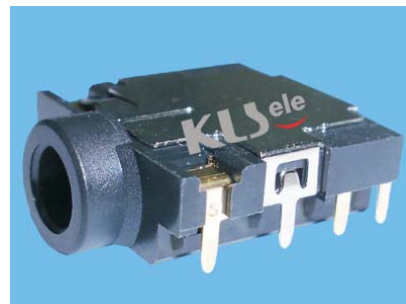
Product No. : KLS1-TPJ-3.5-011A

Pos. NO.

Series NO.

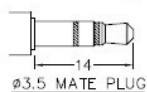
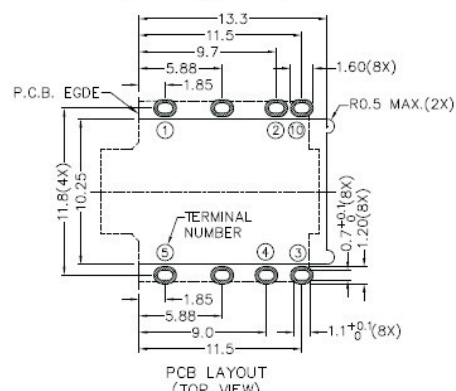
3.5mm Mono Jack * Stereo Jack Series
KLS1-TPJ-3.5-012A (SMD Stereo Jack)

Housing Material / Center Pin Material	PA6T / Brass
Rated Load	DC 12V 1A Max
Contact resistance	$\leq 0.03 \Omega$
Insulation resistance	$\geq 100M \Omega$
Withstand voltage	AC 500V(50Hz) 1min
Actuating Force	3~20N
Life	5000Time


*** MATERIAL**

TERMINAL 1 : COPPER ALLOY
 TERMINAL 2 : COPPER ALLOY
 TERMINAL 3 : COPPER ALLOY
 TERMINAL 4 : COPPER ALLOY
 TERMINAL 5 : COPPER ALLOY
 TERMINAL 10: COPPER ALLOY
 SHIELD : COPPER ALLOY
 HOUSING : PA6T

MODEL NO.	TSH-5196DS
SCHEMATIC	


ORDER INFORMATION
Product No. : KLS1-TPJ-3.5-012A

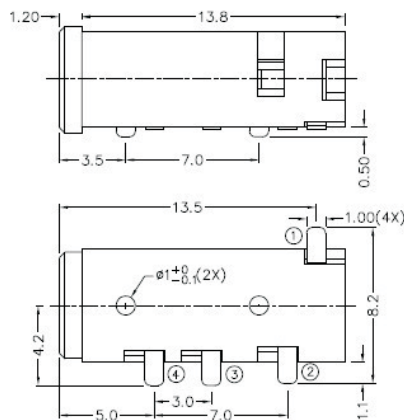
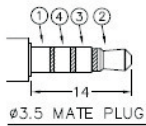
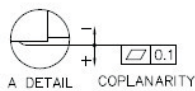
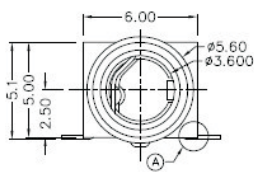
Pos. NO.

Series NO.

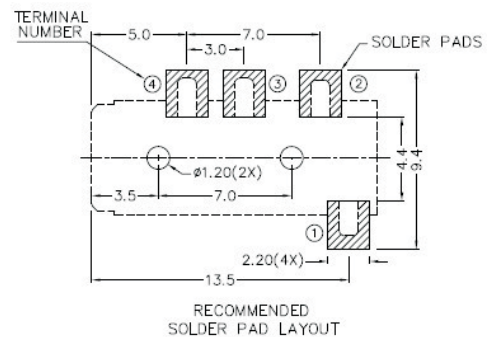
3.5mm Mono Jack * Stereo Jack Series

KLS1-SPJ-3.5-001A (SMD Stereo Jack)

Housing Material / Center Pin Material	PA6T / Brass
Rated Load	DC 12V 1A Max
Contact resistance	$\leq 0.03 \Omega$
Insulation resistance	$\geq 100M \Omega$
Withstand voltage	AC 500V(50Hz) 1min
Actuating Force	3~20N
Life	5000Time



MODEL NO.	TSH-3714	TSH-3713	TSH-3713B
SCHEMATIC			



* MATERIAL

TERMINAL 1 : COPPER ALLOY
TERMINAL 2 : COPPER ALLOY
TERMINAL 3 : COPPER ALLOY
TERMINAL 4 : COPPER ALLOY
HOUSING : PA6T

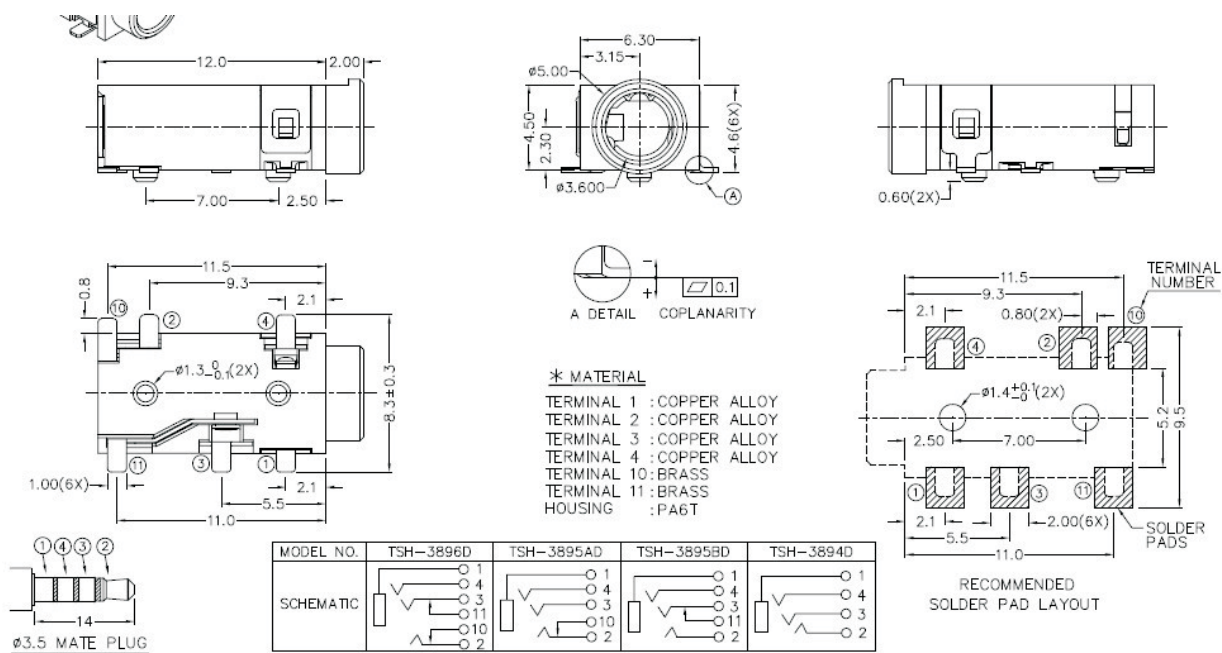
ORDER INFORMATION

Product No. : KLS1-SPJ-3.5-001A

Pos. NO. _____
Series NO. _____

3.5mm Mono Jack * Stereo Jack Series
KLS1-SPJ-3.5-002A (SMD Stereo Jack)

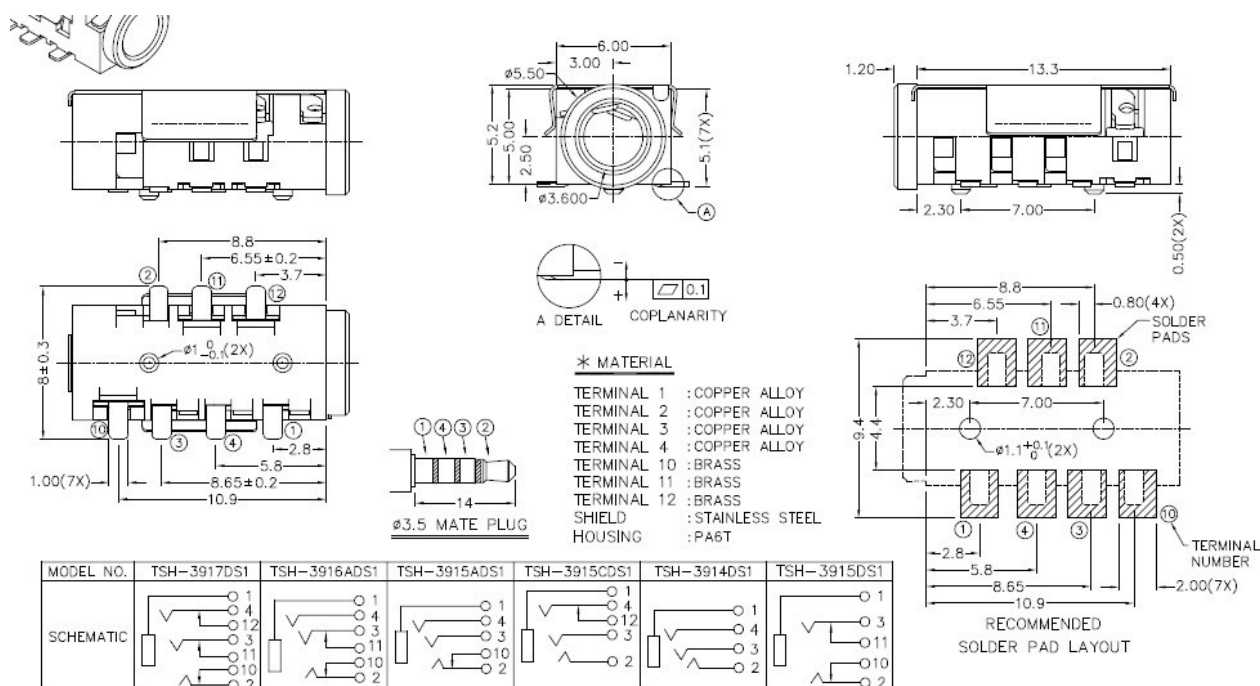
Housing Material / Center Pin Material	PA6T / Brass
Rated Load	DC 12V 1A Max
Contact resistance	$\leq 0.03 \Omega$
Insulation resistance	$\geq 100M \Omega$
Withstand voltage	AC 500V(50Hz) 1min
Actuating Force	3~20N
Life	5000Time


ORDER INFORMATION
Product No. : KLS1-SPJ-3.5-002A
Pos. NO.
Series NO.

3.5mm Mono Jack * Stereo Jack Series

KLS1-SPJ-3.5-003A (SMD Stereo Jack)

Housing Material / Center Pin Material	PA6T / Brass
Rated Load	DC 12V 1A Max
Contact resistance	$\leq 0.03 \Omega$
Insulation resistance	$\geq 100M \Omega$
Withstand voltage	AC 500V(50Hz) 1min
Actuating Force	3~20N
Life	5000Time



ORDER INFORMATION

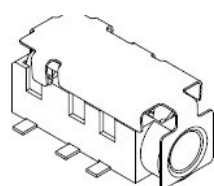
Product No. : KLS1-SPJ-3.5-003A

Pos. NO.

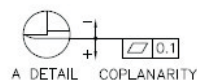
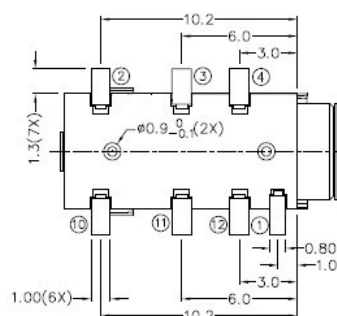
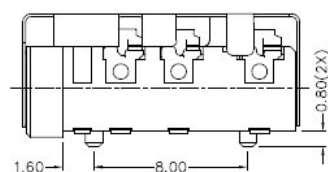
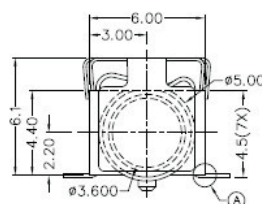
Series NO.

3.5mm Mono Jack * Stereo Jack Series
KLS1-SPJ-3.5-004A (SMD Stereo Jack)

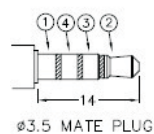
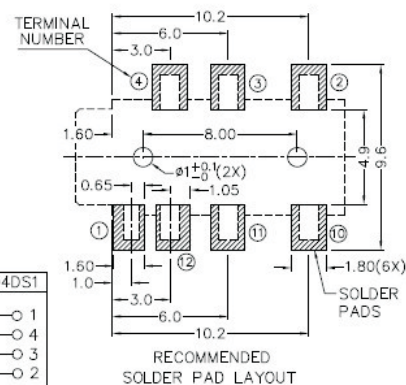
Housing Material / Center Pin Material	PA6T / Brass
Rated Load	DC 12V 1A Max
Contact resistance	$\leq 0.03 \Omega$
Insulation resistance	$\geq 100M \Omega$
Withstand voltage	AC 500V(50Hz) 1min
Actuating Force	3~20N
Life	5000Time


 RoHS
 Compliant

		ADDED INDICATION OF COPLANARITY	J.X.KUANG	28-1



* MATERIAL

 TERMINAL 1 : COPPER ALLOY
 TERMINAL 2 : COPPER ALLOY
 TERMINAL 3 : COPPER ALLOY
 TERMINAL 4 : COPPER ALLOY
 TERMINAL 10: BRASS
 TERMINAL 11: BRASS
 TERMINAL 12: BRASS
 SHIELD : STAINLESS STEEL
 HOUSING : PA6T


MODEL NO.	TSH-3907DS1	TSH-3906ADS1	TSH-3905ADS1	TSH-3905BDS1	TSH-3904DS1
SCHEMATIC					

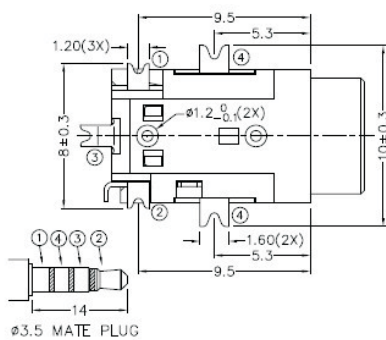
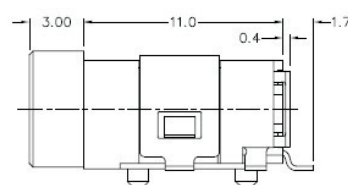
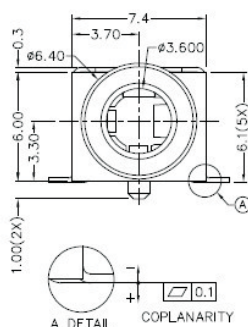
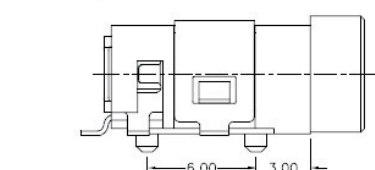
ORDER INFORMATION
Product No. : KLS1-SPJ-3.5-004A

Pos. NO.

Series NO.

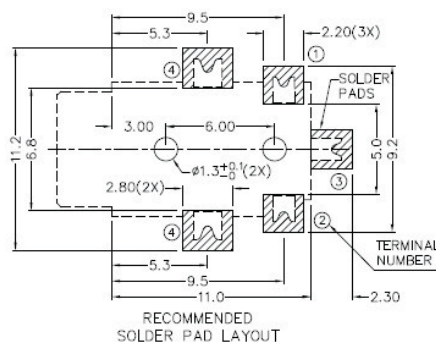
3.5mm Mono Jack * Stereo Jack Series
KLS1-SPJ-3.5-005A (SMD Stereo Jack)

Housing Material / Center Pin Material	PA6T / Brass
Rated Load	DC 12V 1A Max
Contact resistance	$\leq 0.03 \Omega$
Insulation resistance	$\geq 100M \Omega$
Withstand voltage	AC 500V(50Hz) 1min
Actuating Force	3~20N
Life	5000Time


*** MATERIAL**

TERMINAL 1 : COPPER ALLOY
 TERMINAL 2 : COPPER ALLOY
 TERMINAL 3 : COPPER ALLOY
 TERMINAL 4 : COPPER ALLOY
 HOUSING : PA6T

MODEL NO.	TSH-3944D
SCHEMATIC	


KLS1-SPJ-3.5-005B:

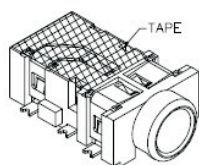
ORDER INFORMATION
Product No. : KLS1-SPJ-3.5-005A

Pos. NO.

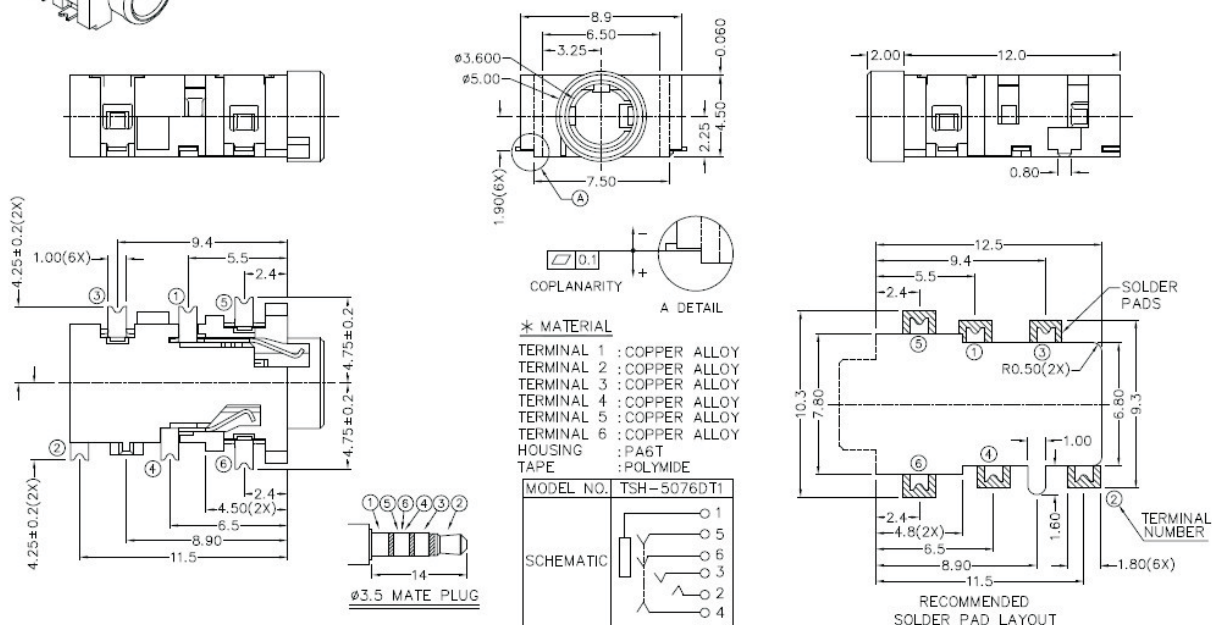
Series NO.

3.5mm Mono Jack * Stereo Jack Series
KLS1-SPJ-3.5-006A (SMD Stereo Jack)

Housing Material / Center Pin Material	PA6T / Brass
Rated Load	DC 12V 1A Max
Contact resistance	$\leq 0.03 \Omega$
Insulation resistance	$\geq 100M \Omega$
Withstand voltage	AC 500V(50Hz) 1min
Actuating Force	3~20N
Life	5000Time


 RoHS
 Compliant

ZONE	SYMBOL	REVISION	APPROVAL	DATE


ORDER INFORMATION
Product No. : KLS1-SPJ-3.5-006A

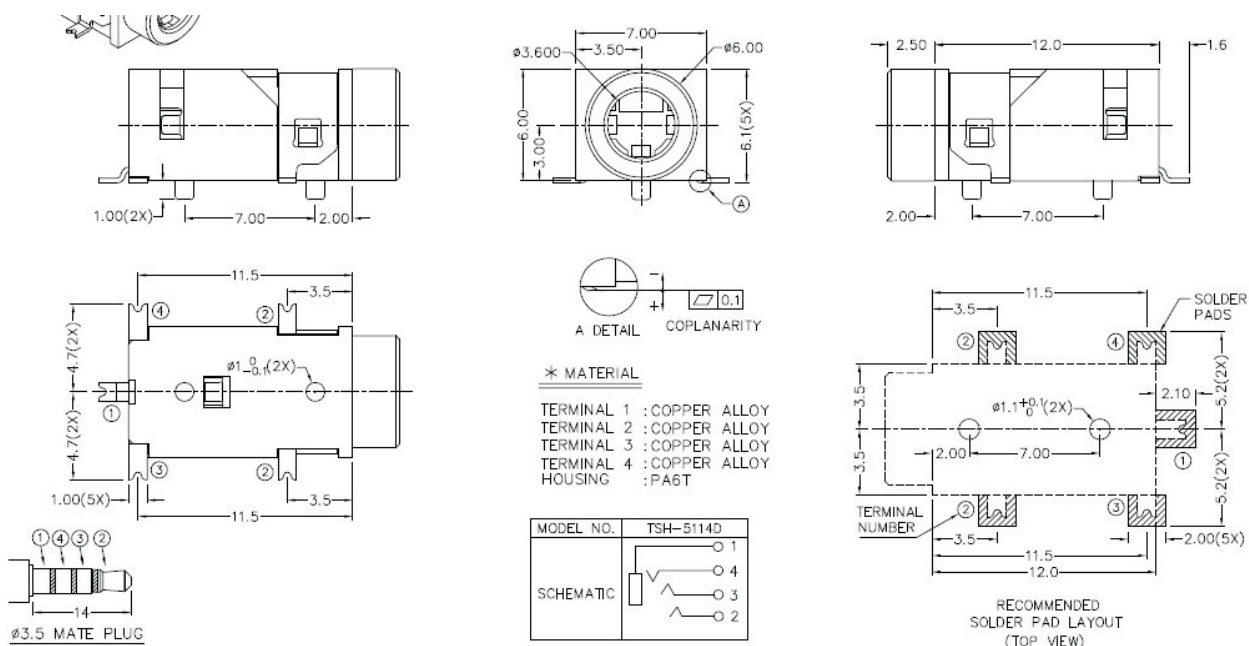
Pos. NO.

Series NO.

3.5mm Mono Jack * Stereo Jack Series

KLS1-SPJ-3.5-007A (SMD Stereo Jack)

Housing Material / Center Pin Material	PA6T / Brass
Rated Load	DC 12V 1A Max
Contact resistance	$\leq 0.03 \Omega$
Insulation resistance	$\geq 100M \Omega$
Withstand voltage	AC 500V(50Hz) 1min
Actuating Force	3~20N
Life	5000Time



ORDER INFORMATION

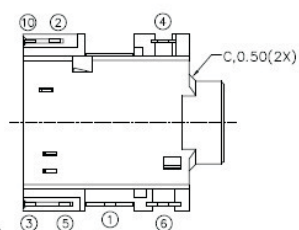
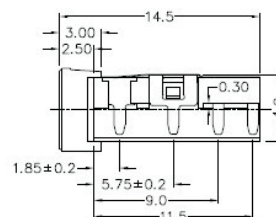
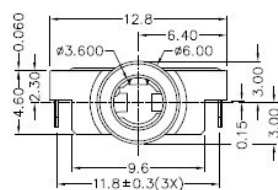
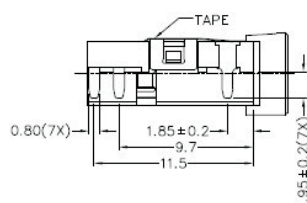
Product No. : KLS1-SPJ-3.5-007A

Pos. NO.

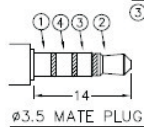
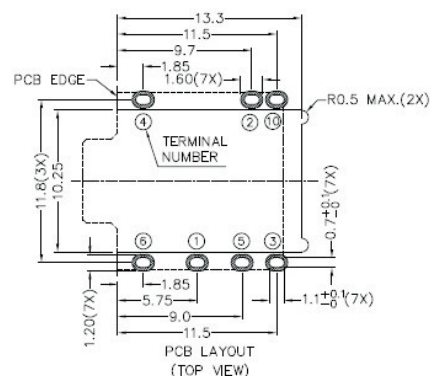
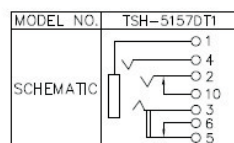
Series NO.

3.5mm Mono Jack * Stereo Jack Series
KLS1-SPJ-3.5-008A (SMD Stereo Jack)

Housing Material / Center Pin Material	PA6T / Brass
Rated Load	DC 12V 1A Max
Contact resistance	$\leq 0.03 \Omega$
Insulation resistance	$\geq 100M \Omega$
Withstand voltage	AC 500V(50Hz) 1min
Actuating Force	3~20N
Life	5000Time

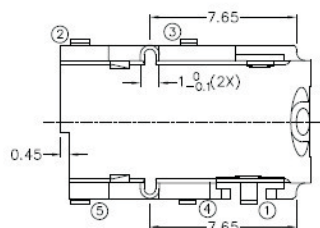
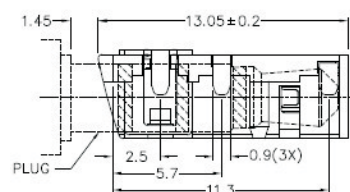
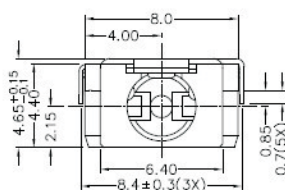
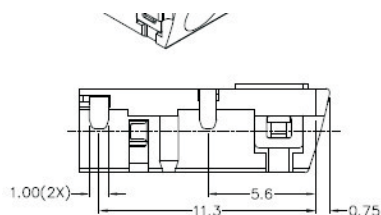

*** MATERIAL**

TERMINAL 1 : COPPER ALLOY
 TERMINAL 2 : COPPER ALLOY
 TERMINAL 3 : COPPER ALLOY
 TERMINAL 4 : COPPER ALLOY
 TERMINAL 5 : COPPER ALLOY
 TERMINAL 6 : COPPER ALLOY
 TERMINAL 10: COPPER ALLOY
 HOUSING : PA6T
 TAPE : POLYIMIDE

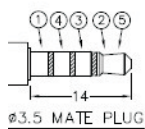
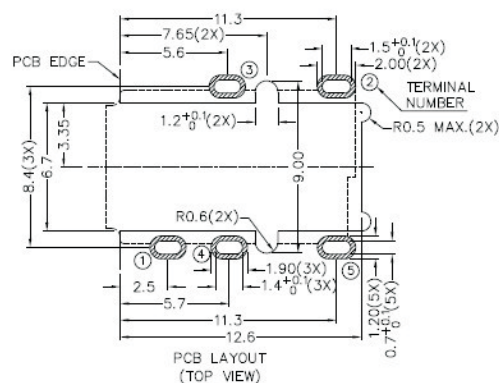
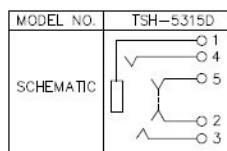

ORDER INFORMATION
Product No. : KLS1-SPJ-3.5-008A
Pos. NO.
Series NO.

3.5mm Mono Jack * Stereo Jack Series
KLS1-SPJ-3.5-009A (SMD Stereo Jack)

Housing Material / Center Pin Material	PA6T / Brass
Rated Load	DC 12V 1A Max
Contact resistance	$\leq 0.03 \Omega$
Insulation resistance	$\geq 100M \Omega$
Withstand voltage	AC 500V(50Hz) 1min
Actuating Force	3~20N
Life	5000Time


*** MATERIAL**

TERMINAL 1 : COPPER ALLOY
 TERMINAL 2 : COPPER ALLOY
 TERMINAL 3 : COPPER ALLOY
 TERMINAL 4 : COPPER ALLOY
 TERMINAL 5 : COPPER ALLOY
 HOUSING : PA6T


ORDER INFORMATION
Product No. : KLS1-SPJ-3.5-009A

Pos. NO.

Series NO.